

## Product datasheet for **TA345853**

### EIF3S4 (EIF3G) Rabbit Polyclonal Antibody

#### Product data:

Product Type:	Primary Antibodies
Applications:	IHC, WB
Recommended Dilution:	WB, IHC
Reactivity:	Human
Host:	Rabbit
Isotype:	IgG
Clonality:	Polyclonal
Immunogen:	The immunogen for anti-EIF3S4 antibody: synthetic peptide directed towards the N terminal of human EIF3S4. Synthetic peptide located within the following region: SPEPELLPGAPLPPPKEVINGNIKTVTEYKIDEDGKKFKIVRTFRIETRK
Formulation:	Liquid. Purified antibody supplied in 1x PBS buffer with 0.09% (w/v) sodium azide and 2% sucrose. <i>Note that this product is shipped as lyophilized powder to China customers.</i>
Purification:	Protein A purified
Conjugation:	Unconjugated
Storage:	Store at -20°C as received.
Stability:	Stable for 12 months from date of receipt.
Predicted Protein Size:	35 kDa
Gene Name:	eukaryotic translation initiation factor 3 subunit G
Database Link:	<a href="#">NP_003746</a> <a href="#">Entrez Gene 8666 Human O75821</a>
Background:	EIF3S4 contains 1 RRM (RNA recognition motif) domain. It binds to the 40S ribosome and promotes the binding of methionyl-tRNA <sub>i</sub> and mRNA. This subunit binds to the 18S rRNA.
Synonyms:	eIF3-delta; EIF3-P42; eIF3-p44; EIF3S4
Note:	Immunogen Sequence Homology: Dog: 100%; Pig: 100%; Rat: 100%; Human: 100%; Mouse: 100%; Bovine: 100%; Guinea pig: 93%; Zebrafish: 79%

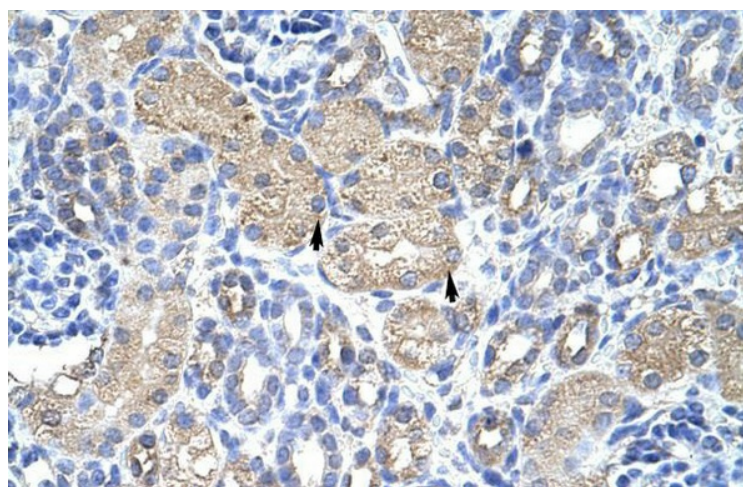


[View online »](#)

## Product images:



WB Suggested Anti-EIF3S4 Antibody Titration:  
1.25 ug/ml; ELISA Titer: 1: 312500; Positive  
Control: HepG2 cell lysate



Rabbit Anti-EIF3S4 Antibody; Paraffin Embedded  
Tissue: Human Kidney; Cellular Data: Epithelial  
cells of renal tubule; Antibody Concentration: 4.0-  
8.0 ug/ml; Magnification: 400X