

## Product datasheet for **TA345850**

### RTCD1 (RTCA) Rabbit Polyclonal Antibody

#### Product data:

Product Type:	Primary Antibodies
Applications:	WB
Recommended Dilution:	WB
Reactivity:	Human
Host:	Rabbit
Isotype:	IgG
Clonality:	Polyclonal
Immunogen:	The immunogen for anti-RTCD1 antibody: synthetic peptide directed towards the N terminal of human RTCD1. Synthetic peptide located within the following region: VQKIRAGRSTPGLRPQHLSGLEMIRDLCDGQLEGAEIGSTEITFTPEKIK
Formulation:	Liquid. Purified antibody supplied in 1x PBS buffer with 0.09% (w/v) sodium azide and 2% sucrose.
Purification:	Affinity Purified
Conjugation:	Unconjugated
Storage:	Store at -20°C as received.
Stability:	Stable for 12 months from date of receipt.
Predicted Protein Size:	39 kDa
Gene Name:	RNA 3'-terminal phosphate cyclase
Database Link:	<a href="#">NP_003720</a> <a href="#">Entrez Gene 8634 Human</a> <a href="#">O00442</a>
Background:	RNA 3-prime-terminal phosphate cyclase catalyzes the ATP-dependent conversion of a 3-prime phosphate to a 2-prime,3-prime-cyclic phosphodiester at the end of RNA. RNA 3-prime-terminal phosphate cyclase (RPC; EC 6.5.1.4) catalyzes the ATP-dependent conversion of a 3-prime phosphate to a 2-prime,3-prime-cyclic phosphodiester at the end of RNA (Genschik et al., 1997 [PubMed 9184239]). [supplied by OMIM]. Sequence Note: removed 1 base from the 3' end that did not align to the reference genome assembly. PRIMARYREFSEQ_SPAN PRIMARY_IDENTIFIER PRIMARY_SPAN COMP 1-1538 Y11651.1 1-1538



[View online »](#)

**Synonyms:** RPC; RTC1; RTCD1

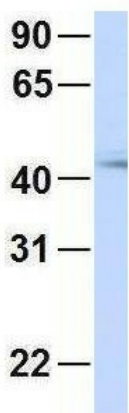
**Note:** Immunogen Sequence Homology: Dog: 100%; Pig: 100%; Rat: 100%; Horse: 100%; Human: 100%; Mouse: 100%; Bovine: 100%; Rabbit: 100%; Zebrafish: 100%; Guinea pig: 100%

**Product images:**



WB Suggested Anti-RTCD1 Antibody Titration: 0.2-1 ug/ml; ELISA Titer: 1: 312500; Positive Control: Human heart

**RTCA**



Rabbit Anti-RTCA  
Sample Type: Human Fetal Brain  
Antibody Concentration: 1ug/mL

Host: Rabbit; Target Name: RTCA; Sample Tissue: Human Fetal Brain; Antibody Dilution: 1.0 ug/ml