

Product datasheet for TA345849

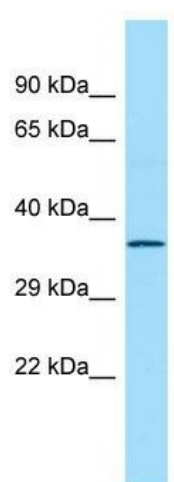
Rtca Rabbit Polyclonal Antibody

Product data:

Product Type:	Primary Antibodies
Applications:	WB
Recommended Dilution:	WB
Reactivity:	Rat
Host:	Rabbit
Isotype:	IgG
Clonality:	Polyclonal
Immunogen:	The immunogen for Anti-Rtcd1 antibody is: synthetic peptide directed towards the middle region of Rat Rtcd1. Synthetic peptide located within the following region: QHLSGLEMVRDLCDGHLEGAEIGSTEITFTPEKIRGGVHTADTKTAGSVC
Formulation:	Liquid. Purified antibody supplied in 1x PBS buffer with 0.09% (w/v) sodium azide and 2% sucrose.
Purification:	Affinity Purified
Conjugation:	Unconjugated
Storage:	Store at -20°C as received.
Stability:	Stable for 12 months from date of receipt.
Predicted Protein Size:	40 kDa
Gene Name:	RNA terminal phosphate cyclase domain 1
Database Link:	NP_001004227 Entrez Gene 295395 Rat
Background:	The function of this protein remains unknown.
Synonyms:	RPC; RPC1; RTC1
Note:	Immunogen Sequence Homology: Dog: 100%; Pig: 100%; Human: 100%; Rabbit: 100%; Guinea pig: 100%; Rat: 93%; Horse: 93%; Bovine: 93%; Mouse: 86%


[View online »](#)

Product images:



Host: Rabbit; Target Name: Rtc1; Sample Tissue: Rat Stomach lysates; Antibody Dilution: 1.0 ug/ml