

Product datasheet for **TA345848**

PRKRA Rabbit Polyclonal Antibody

Product data:

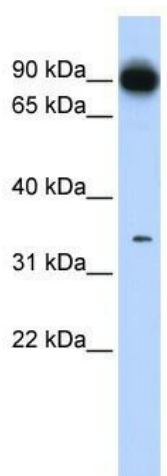
Product Type:	Primary Antibodies
Applications:	WB
Recommended Dilution:	WB
Reactivity:	Human
Host:	Rabbit
Isotype:	IgG
Clonality:	Polyclonal
Immunogen:	The immunogen for anti-PRKRA antibody: synthetic peptide directed towards the N terminal of human PRKRA. Synthetic peptide located within the following region: MSQSRHRAEAPPLEREDSGTFSLGKMITAKPGKTPIQVLHEYGMKTKNIP
Formulation:	Liquid. Purified antibody supplied in 1x PBS buffer with 0.09% (w/v) sodium azide and 2% sucrose. <i>Note that this product is shipped as lyophilized powder to China customers.</i>
Purification:	Affinity Purified
Conjugation:	Unconjugated
Storage:	Store at -20°C as received.
Stability:	Stable for 12 months from date of receipt.
Predicted Protein Size:	34 kDa
Gene Name:	protein activator of interferon induced protein kinase EIF2AK2
Database Link:	NP_003681 Entrez Gene 8575 Human O75569
Background:	PRKRA contains 3 DRBM (double-stranded RNA-binding) domains. It appears to have a pro-apoptotic function that may be suppressed in the presence of growth factor and activates EIF2AK2 in absence of double stranded RNA (dsRNA).
Synonyms:	DYT16; HSD14; PACT; RAX
Note:	Immunogen Sequence Homology: Human: 100%; Dog: 93%; Pig: 93%; Rat: 93%; Mouse: 93%; Rabbit: 93%; Bovine: 86%; Guinea pig: 79%



[View online »](#)

Protein Families: Druggable Genome

Product images:



WB Suggested Anti-PRKRA Antibody Titration: 0.2-1 ug/ml; ELISA Titer: 1: 312500; Positive Control: Human Lung