

Product datasheet for **TA345846**

KHSRP Rabbit Polyclonal Antibody

Product data:

Product Type:	Primary Antibodies
Applications:	IHC, WB
Recommended Dilution:	WB
Reactivity:	Human
Host:	Rabbit
Isotype:	IgG
Clonality:	Polyclonal
Immunogen:	The immunogen for Anti-KHSRP antibody is: synthetic peptide directed towards the middle region of Human KHSRP. Synthetic peptide located within the following region: WEEYKKQAQVATGGGPGAPPGSQPDYSAAWAEYRQQAAYYGQTPGPGG
Formulation:	Liquid. Purified antibody supplied in 1x PBS buffer with 0.09% (w/v) sodium azide and 2% sucrose. <i>Note that this product is shipped as lyophilized powder to China customers.</i>
Purification:	Affinity Purified
Conjugation:	Unconjugated
Storage:	Store at -20°C as received.
Stability:	Stable for 12 months from date of receipt.
Predicted Protein Size:	73 kDa
Gene Name:	KH-type splicing regulatory protein
Database Link:	NP_003676 Entrez Gene 8570 Human Q92945



[View online »](#)

Background: KHSRP binds to the dendritic targeting element and may play a role in mRNA trafficking. It is part of a ternary complex that binds to the downstream control sequence (DCS) of the pre-mRNA. KHSRP mediates exon inclusion in transcripts that are subject to tissue-specific alternative splicing. It may interact with single-stranded DNA from the far-upstream element (FUSE). It is also involved in degradation of inherently unstable mRNAs that contain AU-rich elements (AREs) in their 3' UTR, possibly by recruiting degradation machinery to ARE-containing mRNAs.

Synonyms: FBP2; FUBP2; KSRP

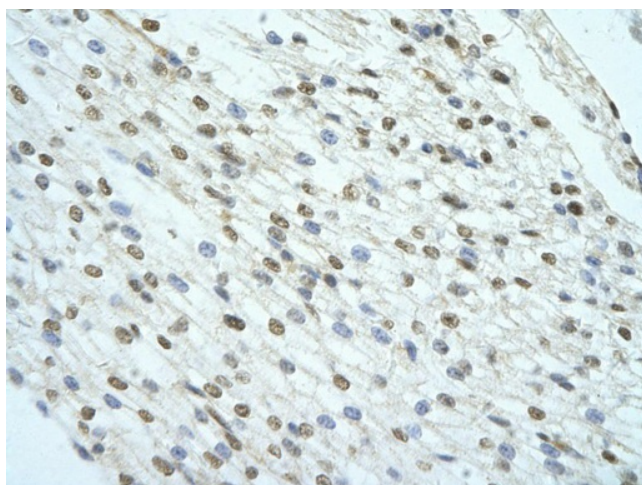
Note: Immunogen Sequence Homology: Dog: 100%; Pig: 100%; Rat: 100%; Horse: 100%; Human: 100%; Mouse: 100%; Bovine: 100%; Zebrafish: 100%; Guinea pig: 100%; Rabbit: 93%

Protein Families: Druggable Genome, Transcription Factors

Product images:



WB Suggested Anti-KHSRP Antibody Titration: 0.2-1 ug/ml; ELISA Titer: 1: 1562500; Positive Control: 293T cell lysate; KHSRP is strongly supported by BioGPS gene expression data to be expressed in Human HEK293T cells



Rabbit Anti-KHSRP Antibody; Paraffin Embedded Tissue: Human Heart cell Cellular Data: cardiac cell of renal tubule; Antibody Concentration: 4.0-8.0 ug/ml; Magnification: 400X