

Product datasheet for **TA345845**

KHSRP Rabbit Polyclonal Antibody

Product data:

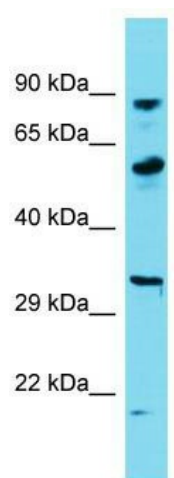
Product Type:	Primary Antibodies
Applications:	WB
Recommended Dilution:	WB
Reactivity:	Human
Host:	Rabbit
Isotype:	IgG
Clonality:	Polyclonal
Immunogen:	The immunogen for Anti-KHSRP antibody is: synthetic peptide directed towards the middle region of Human KHSRP. Synthetic peptide located within the following region: IIGDPYKVVQACEMVMDILRERDQGGFGDRNEYGSRIGGGIDVPVPRHSV
Formulation:	Liquid. Purified antibody supplied in 1x PBS buffer with 0.09% (w/v) sodium azide and 2% sucrose. <i>Note that this product is shipped as lyophilized powder to China customers.</i>
Purification:	Affinity Purified
Conjugation:	Unconjugated
Storage:	Store at -20°C as received.
Stability:	Stable for 12 months from date of receipt.
Predicted Protein Size:	78 kDa
Gene Name:	KH-type splicing regulatory protein
Database Link:	NP_003676 Entrez Gene 8570 Human Q92945
Background:	The KHSRP gene encodes a multifunctional RNA-binding protein implicated in a variety of cellular processes, including transcription, alternative pre-mRNA splicing, and mRNA localization.
Synonyms:	FBP2; FUBP2; KSRP
Note:	Immunogen Sequence Homology: Dog: 100%; Pig: 100%; Rat: 100%; Horse: 100%; Human: 100%; Mouse: 100%; Bovine: 100%; Rabbit: 100%; Guinea pig: 100%



[View online »](#)

Protein Families: Druggable Genome, Transcription Factors

Product images:



Host: Rabbit; Target Name: KHSRP; Sample
Tissue: Thyroid Tumor lysates; Antibody Dilution:
1.0 ug/ml