

Product datasheet for **TA345842**

Dusp11 Rabbit Polyclonal Antibody

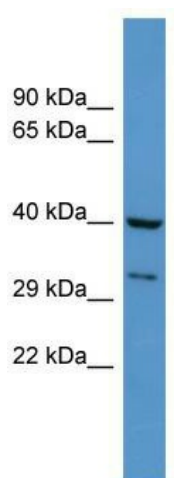
Product data:

Product Type:	Primary Antibodies
Applications:	WB
Recommended Dilution:	WB
Reactivity:	Mouse
Host:	Rabbit
Isotype:	IgG
Clonality:	Polyclonal
Immunogen:	The immunogen for anti-Dusp11 antibody: synthetic peptide corresponding to a region of Mouse. Synthetic peptide located within the following region: GQRMPGTRFIAFKVPLQKKFEAKLMPEECFSPLDLFNKIQEQNEELGLII
Formulation:	Liquid. Purified antibody supplied in 1x PBS buffer with 0.09% (w/v) sodium azide and 2% sucrose. <i>Note that this product is shipped as lyophilized powder to China customers.</i>
Purification:	Affinity Purified
Conjugation:	Unconjugated
Storage:	Store at -20°C as received.
Stability:	Stable for 12 months from date of receipt.
Predicted Protein Size:	38 kDa
Gene Name:	dual specificity phosphatase 11 (RNA/RNP complex 1-interacting)
Database Link:	NP_082375 Entrez Gene 72102 Mouse Q6NXK5
Background:	It has both, RNA 5'-diphosphatase and 5'-triphosphatase activities, but displays a poor protein-tyrosine phosphatase activity. Dusp11 binds to RNA. Dusp11 may participate in nuclear mRNA metabolism.
Synonyms:	PIR1
Note:	Immunogen Sequence Homology: Human: 100%; Rabbit: 100%; Rat: 93%; Horse: 93%; Mouse: 93%; Bovine: 93%; Pig: 92%; Dog: 86%; Guinea pig: 85%



[View online »](#)

Product images:



WB Suggested Anti-Dusp11 Antibody Titration:
0.2-1 ug/ml; ELISA Titer: 1: 62500; Positive
Control: Mouse Heart