

## Product datasheet for TA345841

### Dusp11 Rabbit Polyclonal Antibody

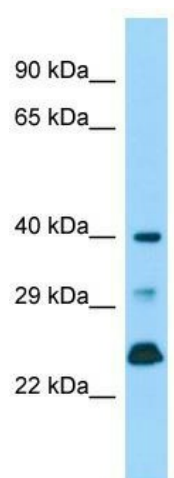
#### Product data:

Product Type:	Primary Antibodies
Applications:	WB
Recommended Dilution:	WB
Reactivity:	Mouse
Host:	Rabbit
Isotype:	IgG
Clonality:	Polyclonal
Immunogen:	The immunogen for Anti-Dusp11 antibody is: synthetic peptide directed towards the middle region of Mouse Dusp11. Synthetic peptide located within the following region: AFKVPLQKKFEAKLMPEECFSPDLDFNKIQEQNEELGLIIDLTYTQRYK
Formulation:	Liquid. Purified antibody supplied in 1x PBS buffer with 0.09% (w/v) sodium azide and 2% sucrose. <i>Note that this product is shipped as lyophilized powder to China customers.</i>
Purification:	Affinity Purified
Conjugation:	Unconjugated
Storage:	Store at -20°C as received.
Stability:	Stable for 12 months from date of receipt.
Predicted Protein Size:	38 kDa
Gene Name:	dual specificity phosphatase 11 (RNA/RNP complex 1-interacting)
Database Link:	<a href="#">NP_082375</a> <a href="#">Entrez Gene 72102 Mouse</a> <a href="#">Q6NXK5</a>
Background:	It has both, RNA 5'-diphosphatase and 5'-triphosphatase activities, but displays a poor protein-tyrosine phosphatase activity. Dusp11 binds to RNA. Dusp11 may participate in nuclear mRNA metabolism.
Synonyms:	PIR1
Note:	Immunogen Sequence Homology: Human: 100%; Dog: 86%; Pig: 86%; Bovine: 86%; Rabbit: 86%; Rat: 79%; Horse: 79%; Mouse: 79%



[View online »](#)

## Product images:



Host: Rabbit; Target Name: Dusp11; Sample  
Tissue: Mouse Testis lysates; Antibody Dilution:  
1.0 ug/ml