

Product datasheet for **TA345837**

CRM1 (XPO1) Rabbit Polyclonal Antibody

Product data:

Product Type:	Primary Antibodies
Applications:	IHC, WB
Recommended Dilution:	WB
Reactivity:	Human
Host:	Rabbit
Isotype:	IgG
Clonality:	Polyclonal
Immunogen:	The immunogen for anti-XPO1 antibody: synthetic peptide directed towards the C terminal of human XPO1. Synthetic peptide located within the following region: NKLGGHITAEIPQIFDAVFECTLNMINKDFEEYPEHRTNFFLLLQAVNSH
Formulation:	Liquid. Purified antibody supplied in 1x PBS buffer with 0.09% (w/v) sodium azide and 2% sucrose. <i>Note that this product is shipped as lyophilized powder to China customers.</i>
Purification:	Affinity Purified
Conjugation:	Unconjugated
Storage:	Store at -20°C as received.
Stability:	Stable for 12 months from date of receipt.
Predicted Protein Size:	123 kDa
Gene Name:	exportin 1
Database Link:	NP_003391 Entrez Gene 7514 Human O14980



[View online »](#)

Background: XPO1 mediates leucine-rich nuclear export signal (NES)-dependent protein transport. Exportin 1 specifically inhibits the nuclear export of Rev and U snRNAs. It is involved in the control of several cellular processes by controlling the localization of cyclin B, MPAK, and MAPKAP kinase 2. XPO1 also regulates NFAT and AP-1. The protein encoded by this gene mediates leucine-rich nuclear export signal (NES)-dependent protein transport. Exportin 1 specifically inhibits the nuclear export of Rev and U snRNAs. It is involved in the control of several cellular processes by controlling the localization of cyclin B, MPAK, and MAPKAP kinase 2. This protein also regulates NFAT and AP-1. Publication Note: This RefSeq record includes a subset of the publications that are available for this gene. Please see the Entrez Gene record to access additional publications.

Synonyms: CRM1; emb; exp1

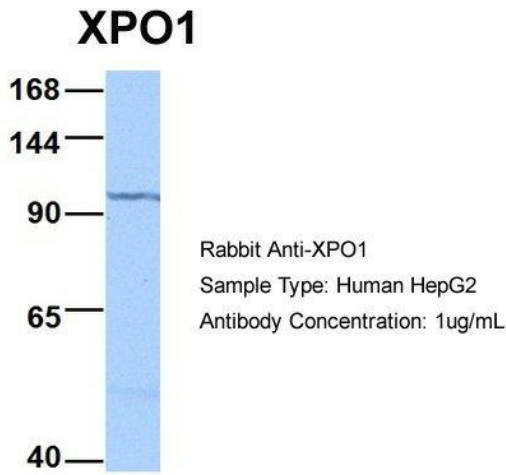
Note: Immunogen Sequence Homology: Dog: 100%; Pig: 100%; Rat: 100%; Horse: 100%; Human: 100%; Mouse: 100%; Bovine: 100%; Rabbit: 100%; Zebrafish: 93%; Yeast: 85%

Protein Families: Druggable Genome

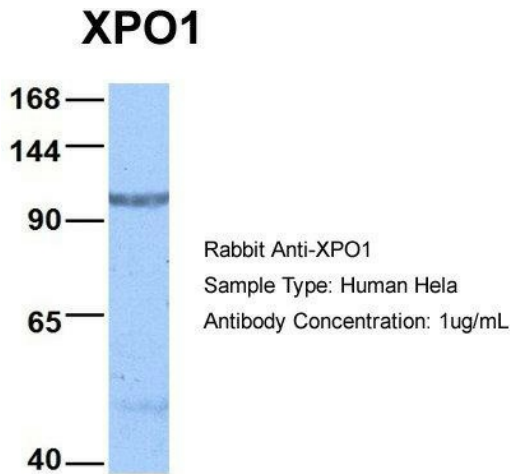
Product images:



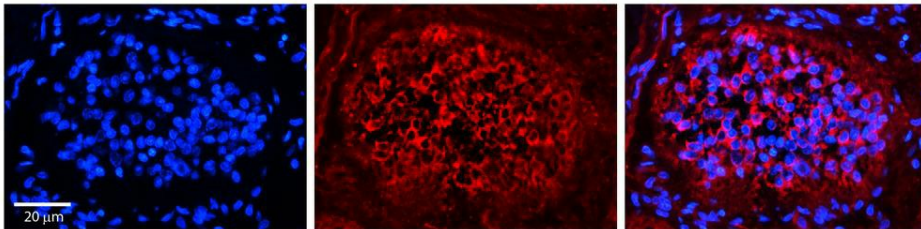
WB Suggested Anti-XPO1 Antibody Titration: 0.2-1 ug/ml; Positive Control: Human heart



Host: Rabbit; Target Name: XPO1; Sample Tissue: HepG2; Antibody Dilution: 1.0 ug/ml; XPO1 is supported by BioGPS gene expression data to be expressed in HepG2



Host: Rabbit; Target Name: XPO1; Sample Tissue: HeLa; Antibody Dilution: 1.0 ug/ml; XPO1 is supported by BioGPS gene expression data to be expressed in HeLa



Rabbit Anti-XPO1 Antibody; Formalin Fixed Paraffin Embedded Tissue: Human Pineal Tissue; Observed Staining: Cytoplasmic in pinealocytes; Primary Antibody Concentration: 1: 100; Other Working Concentrations: 1/600; Secondary Antibody: Donkey anti-Rabbit-Cy3; Secondary Antibody Concentration: 1: 200; Magnification: 20X; Exposure Time: 0.5–2.0 sec;