

Product datasheet for **TA345834**

SRP54 Rabbit Polyclonal Antibody

Product data:

Product Type:	Primary Antibodies
Applications:	WB
Recommended Dilution:	WB
Reactivity:	Human
Host:	Rabbit
Isotype:	IgG
Clonality:	Polyclonal
Immunogen:	The immunogen for anti-SRP54 antibody: synthetic peptide directed towards the middle region of human SRP54. Synthetic peptide located within the following region: ENFEIIVDTSGRHKQEDSLFEEMLQVANAIQPDNIVYVMDASIGQACEA
Formulation:	Liquid. Purified antibody supplied in 1x PBS buffer with 0.09% (w/v) sodium azide and 2% sucrose. <i>Note that this product is shipped as lyophilized powder to China customers.</i>
Purification:	Affinity Purified
Conjugation:	Unconjugated
Storage:	Store at -20°C as received.
Stability:	Stable for 12 months from date of receipt.
Predicted Protein Size:	56 kDa
Gene Name:	signal recognition particle 54kDa
Database Link:	NP_003127 Entrez Gene 6729 Human P61011
Background:	SRP54 belongs to the GTP-binding SRP family. It binds to the signal sequence of presecretory protein when they emerge from the ribosomes and transfers them to TRAM (translocating chain-associating membrane protein).
Synonyms:	signal recognition particle 54kDa



[View online »](#)

Note: Immunogen Sequence Homology: Dog: 100%; Pig: 100%; Rat: 100%; Horse: 100%; Human: 100%; Mouse: 100%; Bovine: 100%; Rabbit: 100%; Zebrafish: 100%; Guinea pig: 100%; Goat: 93%

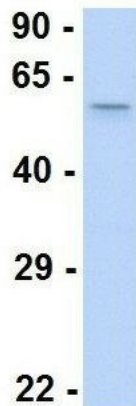
Protein Pathways: Protein export

Product images:



WB Suggested Anti-SRP54 Antibody Titration: 0.2-1 ug/ml; ELISA Titer: 1: 312500; Positive Control: Human Placenta

SRP54



Rabbit Anti-SRP54
 Sample Type: Human Adult Placenta
 Antibody Concentration: 1ug/mL

Hum. Adult Placenta