

## Product datasheet for **TA345833**

### SRP19 Rabbit Polyclonal Antibody

#### Product data:

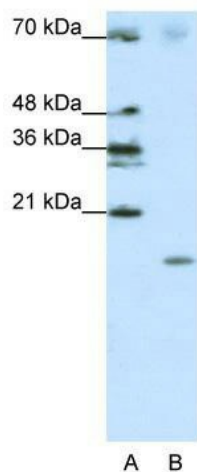
Product Type:	Primary Antibodies
Applications:	IHC, WB
Recommended Dilution:	WB, IHC
Reactivity:	Human
Host:	Rabbit
Isotype:	IgG
Clonality:	Polyclonal
Immunogen:	The immunogen for anti-SRP19 antibody: synthetic peptide directed towards the middle region of human SRP19. Synthetic peptide located within the following region: LCLVQFPSRKSVMLYAAEMIPKPKTRTQKTGGADQSLQQGEGSKKKGKGGK
Formulation:	Liquid. Purified antibody supplied in 1x PBS buffer with 0.09% (w/v) sodium azide and 2% sucrose. <i>Note that this product is shipped as lyophilized powder to China customers.</i>
Purification:	Protein A purified
Conjugation:	Unconjugated
Storage:	Store at -20°C as received.
Stability:	Stable for 12 months from date of receipt.
Predicted Protein Size:	16 kDa
Gene Name:	signal recognition particle 19kDa
Database Link:	<a href="#">NP_003126</a> <a href="#">Entrez Gene 6728 Human P09132</a>
Background:	SRP19 belongs to the SRP19 family. It is signal-recognition-particle assembly and binds directly to 7S RNA and mediates binding of the 54 kDa subunit of the SRP.
Synonyms:	signal recognition particle 19kDa
Note:	Immunogen Sequence Homology: Human: 100%; Dog: 93%; Pig: 93%; Horse: 93%; Bovine: 93%; Rat: 92%; Mouse: 92%; Rabbit: 85%; Zebrafish: 77%



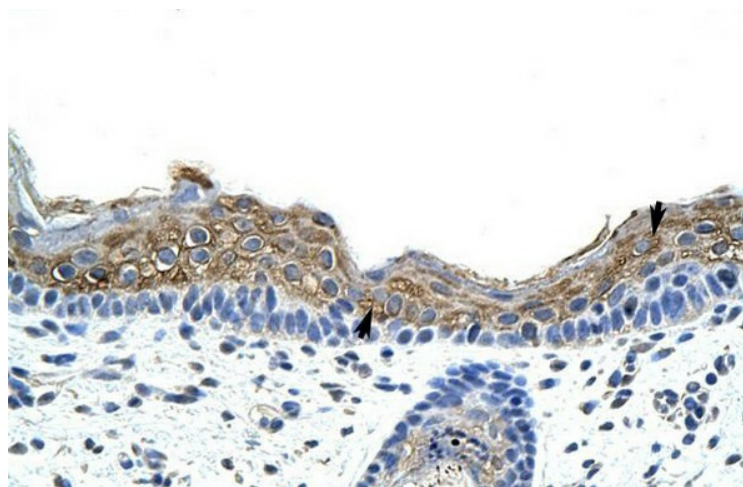
[View online »](#)

Protein Pathways: Protein export

### Product images:



WB Suggested Anti-SRP19 Antibody Titration: 1.25 ug/ml; ELISA Titer: 1: 1562500; Positive Control: Jurkat cell lysate; SRP19 is strongly supported by BioGPS gene expression data to be expressed in Human Jurkat cells



Rabbit Anti-SRP19 Antibody; Paraffin Embedded Tissue: Human Skin; Cellular Data: Squamous epithelial cells; Antibody Concentration: 4.0-8.0 ug/ml; Magnification: 400X