

## Product datasheet for **TA345831**

### SRP14 Rabbit Polyclonal Antibody

#### Product data:

Product Type:	Primary Antibodies
Applications:	IHC, WB
Recommended Dilution:	WB, IHC
Reactivity:	Human
Host:	Rabbit
Isotype:	IgG
Clonality:	Polyclonal
Immunogen:	The immunogen for anti-SRP14 antibody: synthetic peptide directed towards the N terminal of human SRP14. Synthetic peptide located within the following region: KPIPKKGTVEGFEPADNKLLRATDGGKKKISTVSSKEVNKFQMAYSNLL
Formulation:	Liquid. Purified antibody supplied in 1x PBS buffer with 0.09% (w/v) sodium azide and 2% sucrose. <i>Note that this product is shipped as lyophilized powder to China customers.</i>
Purification:	Protein A purified
Conjugation:	Unconjugated
Storage:	Store at -20°C as received.
Stability:	Stable for 12 months from date of receipt.
Predicted Protein Size:	15 kDa
Gene Name:	signal recognition particle 14kDa
Database Link:	<a href="#">NP_003125</a> <a href="#">Entrez Gene 6727 Human</a> <a href="#">P37108</a>
Background:	SRP14 belongs to the SRP14 family. The signal-recognition-particle assembly has a crucial role in targeting secretory proteins to the rough endoplasmic reticulum membrane. SRP9 together with SRP14 and the Alu portion of the SRP RNA, constitutes the elongation arrest domain of SRP. The complex of SRP9 and SRP14 is required for SRP RNA binding.
Synonyms:	ALURBP

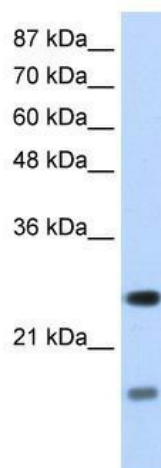


[View online »](#)

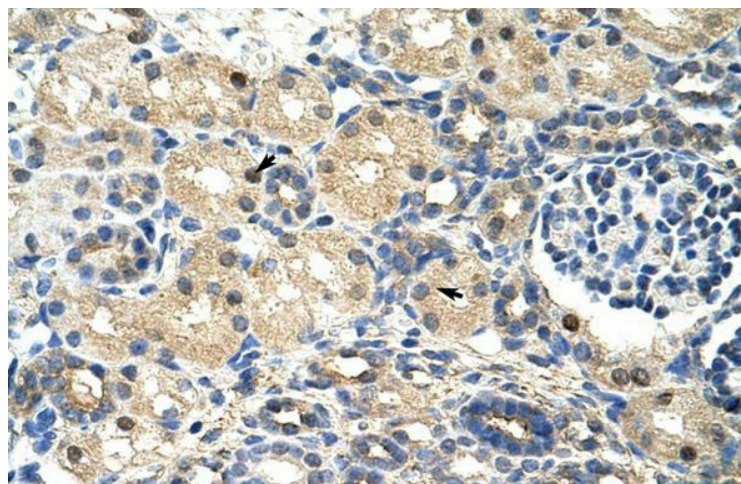
**Note:** Immunogen Sequence Homology: Dog: 100%; Pig: 100%; Rat: 100%; Horse: 100%; Human: 100%; Sheep: 100%; Bovine: 100%; Rabbit: 100%; Guinea pig: 100%; Mouse: 93%; Zebrafish: 86%

**Protein Pathways:** Protein export

**Product images:**



WB Suggested Anti-SRP14 Antibody Titration: 1.25 ug/ml; Positive Control: HepG2 cell lysate; SRP14 is supported by BioGPS gene expression data to be expressed in HepG2



Rabbit Anti-SRP14 Antibody; Paraffin Embedded Tissue: Human Kidney; Cellular Data: Epithelial cells of renal tubule; Antibody Concentration: 4.0-8.0 ug/ml; Magnification: 400X