

## Product datasheet for **TA345829**

### SNRPF Rabbit Polyclonal Antibody

#### Product data:

Product Type:	Primary Antibodies
Applications:	WB
Recommended Dilution:	WB
Reactivity:	Human
Host:	Rabbit
Isotype:	IgG
Clonality:	Polyclonal
Immunogen:	The immunogen for anti-SNRPF antibody: synthetic peptide directed towards the middle region of human SNRPF. Synthetic peptide located within the following region: GYMNMQLANTEEYIDGALSGHLGEVLIRCNNVLYIRGVEEEEEDGEMRE
Formulation:	Liquid. Purified antibody supplied in 1x PBS buffer with 0.09% (w/v) sodium azide and 2% sucrose. <i>Note that this product is shipped as lyophilized powder to China customers.</i>
Purification:	Affinity Purified
Conjugation:	Unconjugated
Storage:	Store at -20°C as received.
Stability:	Stable for 12 months from date of receipt.
Predicted Protein Size:	10 kDa
Gene Name:	small nuclear ribonucleoprotein polypeptide F
Database Link:	<a href="#">NP_003086</a> <a href="#">Entrez Gene 6636 Human</a> <a href="#">P62306</a>
Background:	SNRPF belongs to the snRNP Sm proteins family and is associated with snRNP U1, U2, U4/U6 and U5.
Synonyms:	Sm-F; SMF; snRNP-F
Note:	Immunogen Sequence Homology: Dog: 100%; Pig: 100%; Rat: 100%; Horse: 100%; Human: 100%; Mouse: 100%; Yeast: 100%; Bovine: 100%; Rabbit: 100%; Zebrafish: 100%; Guinea pig: 100%; Goat: 90%

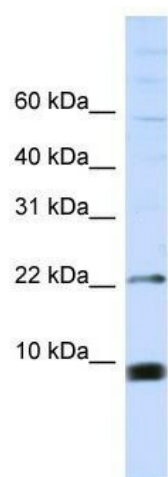


[View online »](#)

Protein Families: Stem cell - Pluripotency

Protein Pathways: Spliceosome

### Product images:



WB Suggested Anti-SNRPF Antibody Titration: 0.2-1 ug/ml; ELISA Titer: 1: 312500; Positive Control: MCF7 cell lysate; SNRPF is supported by BioGPS gene expression data to be expressed in MCF7