

Product datasheet for **TA345828**

SNRPF Rabbit Polyclonal Antibody

Product data:

Product Type:	Primary Antibodies
Applications:	IHC, WB
Recommended Dilution:	WB, IHC
Reactivity:	Human
Host:	Rabbit
Isotype:	IgG
Clonality:	Polyclonal
Immunogen:	The immunogen for anti-SNRPF antibody: synthetic peptide directed towards the N terminal of human SNRPF. Synthetic peptide located within the following region: MSLPLNPKPFLNGLTGKPVVMVCLKWGM EYKGYLVSVDGYMNMQLANTEEY
Formulation:	Liquid. Purified antibody supplied in 1x PBS buffer with 0.09% (w/v) sodium azide and 2% sucrose.
Purification:	Protein A purified
Conjugation:	Unconjugated
Storage:	Store at -20°C as received.
Stability:	Stable for 12 months from date of receipt.
Predicted Protein Size:	9 kDa
Gene Name:	small nuclear ribonucleoprotein polypeptide F
Database Link:	NP_003086 Entrez Gene 6636 Human P62306
Background:	SNRPF belongs to the snRNP Sm proteins family and is associated with snRNP U1, U2, U4/U6 and U5.
Synonyms:	Sm-F; SMF; snRNP-F
Note:	Immunogen Sequence Homology: Dog: 100%; Pig: 100%; Rat: 100%; Horse: 100%; Human: 100%; Mouse: 100%; Bovine: 100%; Rabbit: 100%; Zebrafish: 100%; Guinea pig: 100%; Goat: 86%; Yeast: 86%

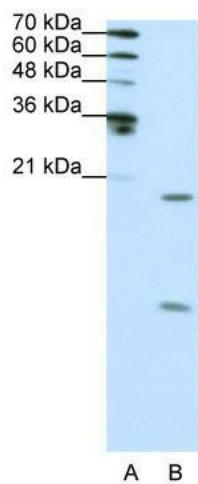


[View online »](#)

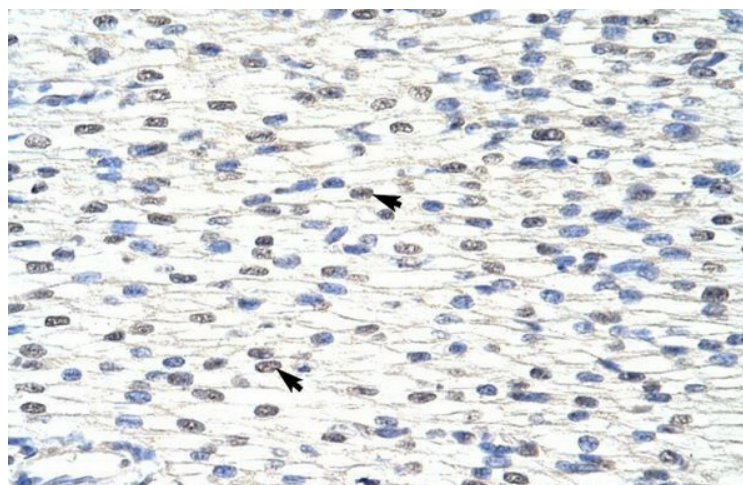
Protein Families: Stem cell - Pluripotency

Protein Pathways: Spliceosome

Product images:



WB Suggested Anti-SNRPF Antibody Titration:
0.31 ug/ml; ELISA Titer: 1: 312500; Positive
Control: HepG2 cell lysate



Rabbit Anti-SNRPF Antibody; Paraffin Embedded
Tissue: Human Heart; Cellular Data: Myocardial
cells; Antibody Concentration: 4.0-8.0 ug/ml;
Magnification: 400X