

Product datasheet for **TA345827**

SNRPB Rabbit Polyclonal Antibody

Product data:

Product Type:	Primary Antibodies
Applications:	WB
Recommended Dilution:	WB
Reactivity:	Human
Host:	Rabbit
Isotype:	IgG
Clonality:	Polyclonal
Immunogen:	The immunogen for anti-SNRPB antibody: synthetic peptide directed towards the N terminal of human SNRPB. Synthetic peptide located within the following region: DKHMNLILCDCDEFKIKPKNSKQAEREEKRVLGLVLLRGENLVSMTEG
Formulation:	Liquid. Purified antibody supplied in 1x PBS buffer with 0.09% (w/v) sodium azide and 2% sucrose. <i>Note that this product is shipped as lyophilized powder to China customers.</i>
Purification:	Affinity Purified
Conjugation:	Unconjugated
Storage:	Store at -20°C as received.
Stability:	Stable for 12 months from date of receipt.
Predicted Protein Size:	24 kDa
Gene Name:	small nuclear ribonucleoprotein polypeptides B and B1
Database Link:	NP_003082 Entrez Gene 6628 Human P14678
Background:	SNRPB is one of several nuclear proteins that are found in common among U1, U2, U4/U6, and U5 small ribonucleoprotein particles (snRNPs). These snRNPs are involved in pre-mRNA splicing, and the encoded protein may also play a role in pre-mRNA splicing or
Synonyms:	B; CCMS; COD; Sm-B; SmB; snRNP-B; SNRPB1
Note:	Immunogen Sequence Homology: Dog: 100%; Pig: 100%; Rat: 100%; Horse: 100%; Human: 100%; Mouse: 100%; Bovine: 100%; Rabbit: 100%; Guinea pig: 100%; Zebrafish: 93%

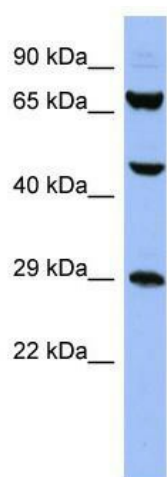


[View online »](#)

Protein Families: Stem cell - Pluripotency

Protein Pathways: Spliceosome, Systemic lupus erythematosus

Product images:



WB Suggested Anti-SNRPB Antibody Titration:
0.2-1 ug/ml; ELISA Titer: 1: 312500; Positive
Control: HT1080 cell lysate