

## Product datasheet for **TA345826**

### SNRPB Rabbit Polyclonal Antibody

#### Product data:

Product Type:	Primary Antibodies
Applications:	WB
Recommended Dilution:	WB
Reactivity:	Human
Host:	Rabbit
Isotype:	IgG
Clonality:	Polyclonal
Immunogen:	The immunogen for anti-SNRPB antibody: synthetic peptide directed towards the middle region of human SNRPB. Synthetic peptide located within the following region: LRGENLVSM TVEGPPP KDTGIARVPLAGAAGGPGIGRAAGRGIPAGVPMP
Formulation:	Liquid. Purified antibody supplied in 1x PBS buffer with 0.09% (w/v) sodium azide and 2% sucrose. <i>Note that this product is shipped as lyophilized powder to China customers.</i>
Purification:	Affinity Purified
Conjugation:	Unconjugated
Storage:	Store at -20°C as received.
Stability:	Stable for 12 months from date of receipt.
Predicted Protein Size:	24 kDa
Gene Name:	small nuclear ribonucleoprotein polypeptides B and B1
Database Link:	<a href="#">NP_003082</a> <a href="#">Entrez Gene 6628 Human</a> <a href="#">P14678</a>



[View online »](#)

**Background:**

SNRPB is one of several nuclear proteins that are found in common among U1, U2, U4/U6, and U5 small ribonucleoprotein particles (snRNPs). These snRNPs are involved in pre-mRNA splicing, and the encoded protein may also play a role in pre-mRNA splicing or snRNP structure. Autoantibodies from patients with systemic lupus erythematosus frequently recognize epitopes on the encoded protein. The protein encoded by this gene is one of several nuclear proteins that are found in common among U1, U2, U4/U6, and U5 small ribonucleoprotein particles (snRNPs). These snRNPs are involved in pre-mRNA splicing, and the encoded protein may also play a role in pre-mRNA splicing or snRNP structure. Autoantibodies from patients with systemic lupus erythematosus frequently recognize epitopes on the encoded protein. Two transcript variants encoding different isoforms (B and B') have been found for this gene.

**Synonyms:**

B; CCMS; COD; Sm-B; SmB; snRNP-B; SNRPB1

**Note:**

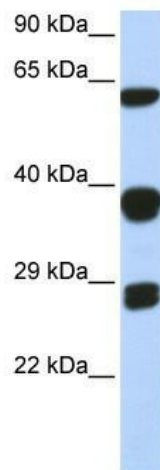
Immunogen Sequence Homology: Dog: 100%; Pig: 100%; Rat: 100%; Horse: 100%; Human: 100%; Mouse: 100%; Bovine: 100%; Rabbit: 100%; Zebrafish: 100%; Guinea pig: 100%

**Protein Families:**

Stem cell - Pluripotency

**Protein Pathways:**

Spliceosome, Systemic lupus erythematosus

**Product images:**

WB Suggested Anti-SNRPB Antibody Titration: 0.2-1 ug/ml; ELISA Titer: 1: 312500; Positive Control: 293T cell lysate; SNRPB is strongly supported by BioGPS gene expression data to be expressed in Human HEK293T cells