

Product datasheet for **TA345825**

SNRPA1 Rabbit Polyclonal Antibody

Product data:

Product Type:	Primary Antibodies
Applications:	WB
Recommended Dilution:	WB
Reactivity:	Human
Host:	Rabbit
Isotype:	IgG
Clonality:	Polyclonal
Immunogen:	The immunogen for anti-SNRPA1 antibody: synthetic peptide directed towards the N terminal of human SNRPA1. Synthetic peptide located within the following region: VKLTAEIEQAAQYTNAVRDRELDLRGYKIPVIENLGATLDQFDAIDFSD
Formulation:	Liquid. Purified antibody supplied in 1x PBS buffer with 0.09% (w/v) sodium azide and 2% sucrose. <i>Note that this product is shipped as lyophilized powder to China customers.</i>
Purification:	Affinity Purified
Conjugation:	Unconjugated
Storage:	Store at -20°C as received.
Stability:	Stable for 12 months from date of receipt.
Predicted Protein Size:	28 kDa
Gene Name:	small nuclear ribonucleoprotein polypeptide A'
Database Link:	NP_003081 Entrez Gene 6627 Human P09661
Background:	SNRPA1 contains 3 LRR (leucine-rich) repeats and belongs to the U2 small nuclear ribonucleoprotein A family. It is associated with sn-RNP U2 and helps the A' protein to bind stem loop IV of U2 snRNA.
Synonyms:	Lea1
Note:	Immunogen Sequence Homology: Dog: 100%; Pig: 100%; Rat: 100%; Horse: 100%; Human: 100%; Mouse: 100%; Sheep: 100%; Bovine: 100%; Guinea pig: 100%; Zebrafish: 93%

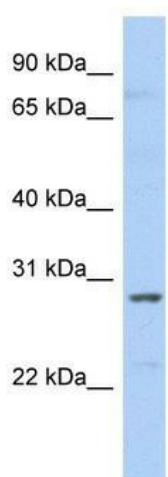


[View online »](#)

Protein Families: Druggable Genome

Protein Pathways: Spliceosome

Product images:



WB Suggested Anti-SNRPA1 Antibody Titration:
0.2-1 ug/ml; Positive Control: Human Liver