

Product datasheet for **TA345824**

SNRP70 (SNRNP70) Rabbit Polyclonal Antibody

Product data:

Product Type:	Primary Antibodies
Applications:	IHC, WB
Recommended Dilution:	WB
Reactivity:	Human
Host:	Rabbit
Isotype:	IgG
Clonality:	Polyclonal
Immunogen:	The immunogen for anti-SNRP70 antibody: synthetic peptide directed towards the C terminal of human SNRP70. Synthetic peptide located within the following region: RERERKEELRGGGGDMAEPSEAGDAPPDDGPPGELGPDGPDGPEEKGRDR
Formulation:	Liquid. Purified antibody supplied in 1x PBS buffer with 0.09% (w/v) sodium azide and 2% sucrose. <i>Note that this product is shipped as lyophilized powder to China customers.</i>
Purification:	Affinity Purified
Conjugation:	Unconjugated
Storage:	Store at -20°C as received.
Stability:	Stable for 12 months from date of receipt.
Predicted Protein Size:	51 kDa
Gene Name:	small nuclear ribonucleoprotein U1 subunit 70
Database Link:	NP_003080 Entrez Gene 6625 Human P08621
Background:	SNRP70 contains 1 RRM (RNA recognition motif) domain and mediates the splicing of pre-mRNA by binding to the loop I region of U1-snRNA. Western blots using two different antibodies against two unique regions of this protein target confirm the same apparent molecular weight in our tests.
Synonyms:	RNPU1Z; RPU1; Snp1; SNRP70; U1-70K; U1AP; U1RNP; U170K



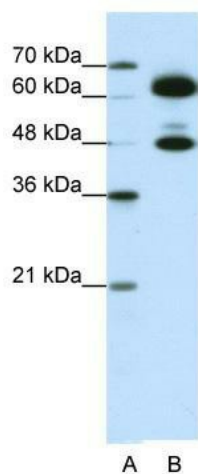
[View online »](#)

Note: Immunogen Sequence Homology: Dog: 100%; Pig: 100%; Rat: 100%; Human: 100%; Bovine: 100%; Rabbit: 100%; Guinea pig: 100%; Mouse: 93%

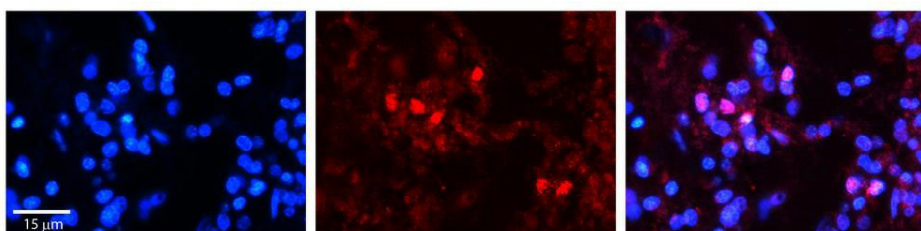
Protein Families: Druggable Genome

Protein Pathways: Spliceosome

Product images:



WB Suggested Anti-SNRP70 Antibody Titration: 0.2-1 ug/ml; ELISA Titer: 1: 62500; Positive Control: HepG2 cell lysate; SNRNP70 is supported by BioGPS gene expression data to be expressed in HepG2



Rabbit Anti-SNRP70 Antibody; Formalin Fixed Paraffin Embedded Tissue: Human Pineal Tissue; Observed Staining: Nuclear in pinealocytes; Primary Antibody Concentration: 1: 100; Secondary Antibody: Donkey anti-Rabbit-Cy3; Secondary Antibody Concentration: 1: 200; Magnification: 20X; Exposure Time: 0.5–2.0 sec;