

## Product datasheet for **TA345821**

### Ribonuclease A (RNASE1) Rabbit Polyclonal Antibody

#### Product data:

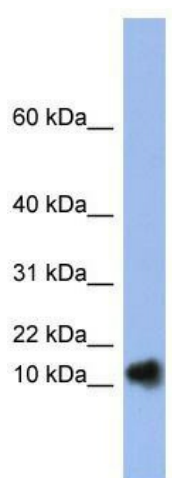
Product Type:	Primary Antibodies
Applications:	WB
Recommended Dilution:	WB
Reactivity:	Human
Host:	Rabbit
Isotype:	IgG
Clonality:	Polyclonal
Immunogen:	The immunogen for anti-RNASE1 antibody: synthetic peptide directed towards the N terminal of human RNASE1. Synthetic peptide located within the following region: MALEKSLVRLLLLVLILLVLGWVQPSLGKESRAKKFQRQHMDSDSSPSSS
Formulation:	Liquid. Purified antibody supplied in 1x PBS buffer with 0.09% (w/v) sodium azide and 2% sucrose. <i>Note that this product is shipped as lyophilized powder to China customers.</i>
Purification:	Affinity Purified
Conjugation:	Unconjugated
Storage:	Store at -20°C as received.
Stability:	Stable for 12 months from date of receipt.
Predicted Protein Size:	15 kDa
Gene Name:	ribonuclease A family member 1, pancreatic
Database Link:	<a href="#">NP_002924</a> <a href="#">Entrez Gene 6035 Human P07998</a>
Background:	This gene encodes a member of the pancreatic-type of secretory ribonucleases, a subset of the ribonuclease A superfamily. The encoded endonuclease cleaves internal phosphodiester RNA bonds on the 3'-side of pyrimidine bases. It prefers poly(C) as a substr
Synonyms:	RAC1; RIB1; RNS1
Note:	Immunogen Sequence Homology: Human: 100%; Mouse: 100%; Pig: 93%; Rat: 93%; Horse: 79%; Bovine: 79%; Rabbit: 79%; Guinea pig: 79%



[View online »](#)

Protein Families: Secreted Protein, Transmembrane

### Product images:



WB Suggested Anti-RNASE1 Antibody Titration:  
0.2-1 ug/ml; ELISA Titer: 1: 1562500; Positive  
Control: Human Spleen