

Product datasheet for **TA345820**

Ribonuclease A (RNASE1) Rabbit Polyclonal Antibody

Product data:

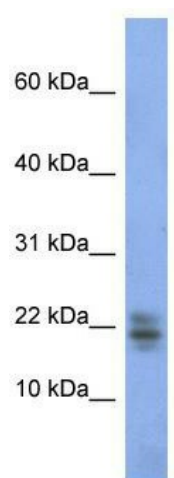
| | |
|-------------------------|---|
| Product Type: | Primary Antibodies |
| Applications: | WB |
| Recommended Dilution: | WB |
| Reactivity: | Human |
| Host: | Rabbit |
| Isotype: | IgG |
| Clonality: | Polyclonal |
| Immunogen: | The immunogen for anti-RNASE1 antibody: synthetic peptide directed towards the middle region of human RNASE1. Synthetic peptide located within the following region: MHITDCRLTNGSRYPNCAYRTSPKERHIIVACEGSPYVPVHFDASVEDST |
| Formulation: | Liquid. Purified antibody supplied in 1x PBS buffer with 0.09% (w/v) sodium azide and 2% sucrose. <i>Note that this product is shipped as lyophilized powder to China customers.</i> |
| Purification: | Affinity Purified |
| Conjugation: | Unconjugated |
| Storage: | Store at -20°C as received. |
| Stability: | Stable for 12 months from date of receipt. |
| Predicted Protein Size: | 15 kDa |
| Gene Name: | ribonuclease A family member 1, pancreatic |
| Database Link: | NP_002924 Entrez Gene 6035 Human P07998 |
| Background: | This gene encodes a member of the pancreatic-type of secretory ribonucleases, a subset of the ribonuclease A superfamily. The encoded endonuclease cleaves internal phosphodiester RNA bonds on the 3'-side of pyrimidine bases. It prefers poly(C) as a substr |
| Synonyms: | RAC1; RIB1; RNS1 |
| Note: | Immunogen Sequence Homology: Pig: 100%; Rat: 100%; Goat: 100%; Human: 100%; Mouse: 100%; Sheep: 100%; Bovine: 100%; Horse: 93%; Guinea pig: 93%; Rabbit: 91% |



[View online »](#)

Protein Families: Secreted Protein, Transmembrane

Product images:



WB Suggested Anti-RNASE1 Antibody Titration:
0.2-1 ug/ml; ELISA Titer: 1: 1562500; Positive
Control: Human kidney