

Product datasheet for **TA345814**

RBM4 Rabbit Polyclonal Antibody

Product data:

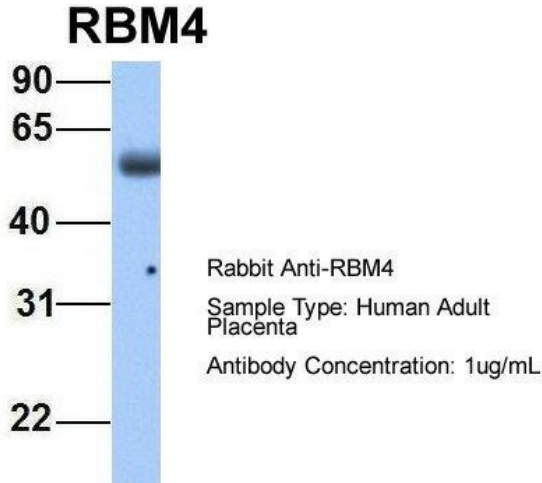
Product Type:	Primary Antibodies
Applications:	WB
Recommended Dilution:	WB
Reactivity:	Human
Host:	Rabbit
Isotype:	IgG
Clonality:	Polyclonal
Immunogen:	The immunogen for anti-RBM4 antibody: synthetic peptide directed towards the middle region of human RBM4. Synthetic peptide located within the following region: TAPGMGDQSGCYRCGKEGHWSKECPIDRSGRVADLTEQYNEQYGAVRTPY
Formulation:	Liquid. Purified antibody supplied in 1x PBS buffer with 0.09% (w/v) sodium azide and 2% sucrose. <i>Note that this product is shipped as lyophilized powder to China customers.</i>
Purification:	Affinity Purified
Conjugation:	Unconjugated
Storage:	Store at -20°C as received.
Stability:	Stable for 12 months from date of receipt.
Predicted Protein Size:	40 kDa
Gene Name:	RNA binding motif protein 4
Database Link:	NP_002887 Entrez Gene 5936 Human Q9BWF3
Background:	RBM4 contains 1 CCHC-type zinc finger and 2 RRM (RNA recognition motif) domains. It may play a role in alternative splice site selection during pre-mRNA processing. RBM4 is down-regulated in fetal Down syndrome (DS) brain.
Synonyms:	LARK; RBM4A; ZCCHC21; ZCRB3A
Note:	Immunogen Sequence Homology: Pig: 100%; Rat: 100%; Human: 100%; Mouse: 100%; Rabbit: 100%; Guinea pig: 100%; Dog: 93%; Goat: 93%; Horse: 93%; Bovine: 93%



[View online »](#)

Protein Families: Druggable Genome

Product images:



Host: Rabbit; Target Name: RBM4; Sample Tissue: Human Adult Placenta; Antibody Dilution: 1.0 ug/ml



WB Suggested Anti-RBM4 Antibody Titration: 0.2-1 ug/ml; Positive Control: MCF7 cell lysate RBM4 is strongly supported by BioGPS gene expression data to be expressed in Human MCF7 cells