

## Product datasheet for **TA345807**

### PPP1R10 Rabbit Polyclonal Antibody

#### Product data:

Product Type:	Primary Antibodies
Applications:	IF, WB
Recommended Dilution:	WB, IF
Reactivity:	Human
Host:	Rabbit
Isotype:	IgG
Clonality:	Polyclonal
Immunogen:	The immunogen for anti-PPP1R10 antibody: synthetic peptide directed towards the N terminal of human PPP1R10. Synthetic peptide located within the following region: SQSSTQPAEKDKKKRKDEGKSRTTLPERPLTEVKAETRAEEAPEKKREKP
Formulation:	Liquid. Purified antibody supplied in 1x PBS buffer with 0.09% (w/v) sodium azide and 2% sucrose. <i>Note that this product is shipped as lyophilized powder to China customers.</i>
Purification:	Affinity Purified
Conjugation:	Unconjugated
Storage:	Store at -20°C as received.
Stability:	Stable for 12 months from date of receipt.
Predicted Protein Size:	99 kDa
Gene Name:	protein phosphatase 1 regulatory subunit 10
Database Link:	<a href="#">NP_002705</a> <a href="#">Entrez Gene 5514 Human</a> <a href="#">Q96QC0</a>



[View online »](#)

**Background:**

PPP1R10 is a protein with similarity to a rat protein that has an inhibitory effect on protein phosphatase-1 (PP1). The rat protein localizes to the nucleus and colocalizes with chromatin at distinct phases during mitosis. This gene encodes a protein with similarity to a rat protein that has an inhibitory effect on protein phosphatase-1 (PP1). The rat protein localizes to the nucleus and colocalizes with chromatin at distinct phases during mitosis. This gene lies within the major histocompatibility complex class I region on chromosome 6. Publication Note: This RefSeq record includes a subset of the publications that are available for this gene. Please see the Entrez Gene record to access additional publications.

**Synonyms:**

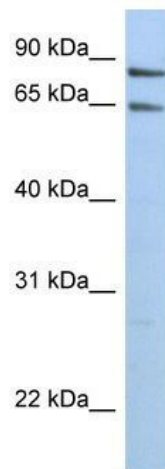
CAT53; FB19; p99; PNUTS; PP1R10; R111

**Note:**

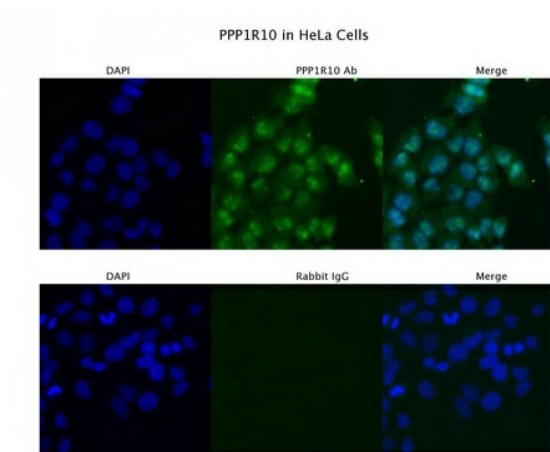
Immunogen Sequence Homology: Dog: 100%; Pig: 100%; Rat: 100%; Human: 100%; Mouse: 100%; Bovine: 100%; Horse: 92%; Rabbit: 92%; Guinea pig: 79%

**Protein Families:**

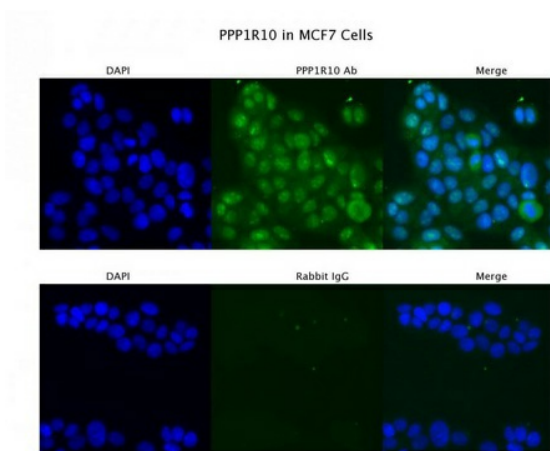
Druggable Genome, Phosphatase, Transcription Factors

**Product images:**

WB Suggested Anti-PPP1R10 Antibody Titration: 0.2-1 ug/ml; Positive Control: HeLa cell lysate; PPP1R10 is strongly supported by BioGPS gene expression data to be expressed in Human HeLa cells



Sample Type: HeLa; Primary Antibody Dilution: 4 ug/ml; Secondary Antibody: Anti-rabbit Alexa 546; Secondary Antibody Dilution: 2 ug/ml; Gene Name: PPP1R10



Sample Type: MCF7; Primary Antibody Dilution: 4 ug/ml; Secondary Antibody: Anti-rabbit Alexa 546; Secondary Antibody Dilution: 2 ug/ml; Gene Name: PPP1R10