

Product datasheet for **TA345803**

PABP (PABPC1) Rabbit Polyclonal Antibody

Product data:

Product Type:	Primary Antibodies
Applications:	IHC, WB
Recommended Dilution:	IHC, WB
Reactivity:	Human
Host:	Rabbit
Isotype:	IgG
Clonality:	Polyclonal
Immunogen:	The immunogen for anti-PABPC1 antibody: synthetic peptide directed towards the middle region of human PABPC1. Synthetic peptide located within the following region: LRPSRWTAQGARPHPFQNMPGAIRPAAPRPPFSTMRPASSQVPRVMSTQ
Formulation:	Liquid. Purified antibody supplied in 1x PBS buffer with 0.09% (w/v) sodium azide and 2% sucrose. <i>Note that this product is shipped as lyophilized powder to China customers.</i>
Purification:	Affinity Purified
Conjugation:	Unconjugated
Storage:	Store at -20°C as received.
Stability:	Stable for 12 months from date of receipt.
Predicted Protein Size:	71 kDa
Gene Name:	poly(A) binding protein cytoplasmic 1
Database Link:	NP_002559 Entrez Gene 26986 Human P11940



[View online »](#)

Background:

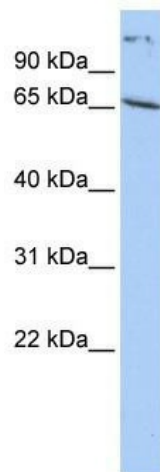
The poly(A)-binding protein (PABP), which is found complexed to the 3-prime poly(A) tail of eukaryotic mRNA, is required for poly(A) shortening and translation initiation. In humans, the PABPs comprise a small nuclear isoform and a conserved gene family that displays at least 3 functional proteins: PABP1 (PABPC1), inducible PABP (iPABP, or PABPC4; MIM 603407), and PABP3 (PABPC3; MIM 604680). In addition, there are at least 4 pseudogenes, PABPCP1 to PABPCP4. The poly(A)-binding protein (PABP), which is found complexed to the 3-prime poly(A) tail of eukaryotic mRNA, is required for poly(A) shortening and translation initiation. In humans, the PABPs comprise a small nuclear isoform and a conserved gene family that displays at least 3 functional proteins: PABP1 (PABPC1), inducible PABP (iPABP, or PABPC4; MIM 603407), and PABP3 (PABPC3; MIM 604680). In addition, there are at least 4 pseudogenes, PABPCP1 to PABPCP4. [supplied by OMIM]. Publication Note: This RefSeq record includes a subset of the publications that are available for this gene. Please see the Entrez Gene record to access additional publications.

Synonyms:

PAB1; PABP; PABP1; PABPC2; PABPL1

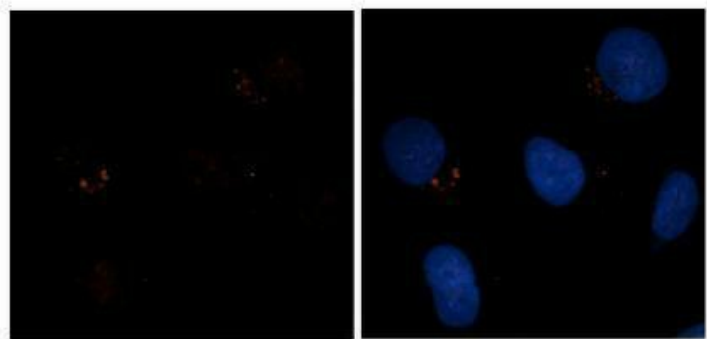
Note:

Immunogen Sequence Homology: Dog: 100%; Pig: 100%; Rat: 100%; Horse: 100%; Human: 100%; Mouse: 100%; Sheep: 100%; Bovine: 100%; Rabbit: 100%; Guinea pig: 100%

Product images:

WB Suggested Anti-PABPC1 Antibody Titration:
0.2-1 ug/ml; ELISA Titer: 1: 1562500; Positive
Control: HepG2 cell lysate

PABPC1



Red: PABPC1
Blue: DAPI

Sample Type: Human brain stem cells (NT2)
Primary Antibody Dilution: 1: 500; Secondary
Antibody: Goat anti-rabbit Alexa Fluor 594;
Secondary Antibody dilution: 1: 1000; Color/Signal
Descriptions: Red: PABPC1 Blue: DAPI; Gene
Name: PABPC1