

## Product datasheet for **TA345801**

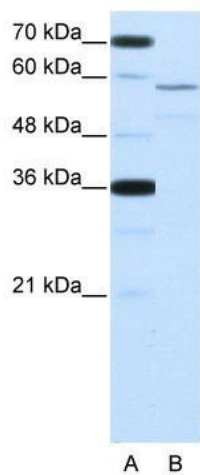
### NOVA2 Rabbit Polyclonal Antibody

#### Product data:

Product Type:	Primary Antibodies
Applications:	WB
Recommended Dilution:	WB
Reactivity:	Human
Host:	Rabbit
Isotype:	IgG
Clonality:	Polyclonal
Immunogen:	The immunogen for anti-NOVA2 antibody: synthetic peptide directed towards the middle region of human NOVA2. Synthetic peptide located within the following region: EPEQVHKAVSAIVQKVQEDPQSSSCLNISYANVAGPVANSNPTGSPYASP
Formulation:	Liquid. Purified antibody supplied in 1x PBS buffer with 0.09% (w/v) sodium azide and 2% sucrose. <i>Note that this product is shipped as lyophilized powder to China customers.</i>
Purification:	Protein A purified
Conjugation:	Unconjugated
Storage:	Store at -20°C as received.
Stability:	Stable for 12 months from date of receipt.
Predicted Protein Size:	54 kDa
Gene Name:	NOVA alternative splicing regulator 2
Database Link:	<a href="#">NP_002507</a> <a href="#">Entrez Gene 4858 Human</a> <a href="#">Q9UNW9</a>
Background:	NOVA2 may regulate RNA splicing or metabolism in a specific subset of developing neurons. It binds single strand RNA.
Synonyms:	ANOVA; NOVA3
Note:	Immunogen Sequence Homology: Dog: 100%; Pig: 100%; Rat: 100%; Horse: 100%; Human: 100%; Mouse: 100%; Bovine: 100%; Rabbit: 100%; Zebrafish: 92%; Guinea pig: 82%



[View online »](#)

**Product images:**

WB Suggested Anti-NOVA2 Antibody Titration: 2.5 ug/ml; Positive Control: HepG2 cell lysate