

Product datasheet for **TA345800**

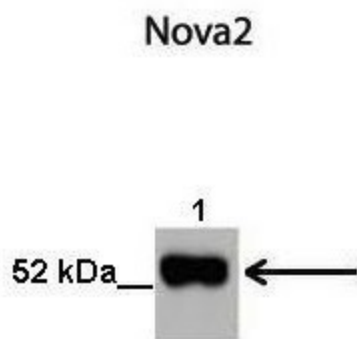
NOVA2 Rabbit Polyclonal Antibody

Product data:

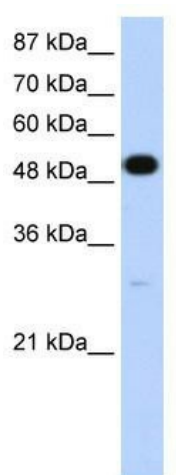
Product Type:	Primary Antibodies
Applications:	WB
Recommended Dilution:	WB
Reactivity:	Human
Host:	Rabbit
Isotype:	IgG
Clonality:	Polyclonal
Immunogen:	The immunogen for anti-NOVA2 antibody: synthetic peptide directed towards the N terminal of human NOVA2. Synthetic peptide located within the following region: MEPEAPDSRKRPLETPPEVVCTKRSNTGEEGEYFLKVLIPSYAAGSIIGK
Formulation:	Liquid. Purified antibody supplied in 1x PBS buffer with 0.09% (w/v) sodium azide and 2% sucrose. <i>Note that this product is shipped as lyophilized powder to China customers.</i>
Purification:	Protein A purified
Conjugation:	Unconjugated
Storage:	Store at -20°C as received.
Stability:	Stable for 12 months from date of receipt.
Predicted Protein Size:	54 kDa
Gene Name:	NOVA alternative splicing regulator 2
Database Link:	NP_002507 Entrez Gene 4858 Human Q9UNW9
Background:	NOVA2 may regulate RNA splicing or metabolism in a specific subset of developing neurons. It binds single strand RNA.
Synonyms:	ANOVA; NOVA3
Note:	Immunogen Sequence Homology: Pig: 100%; Human: 100%; Mouse: 100%; Rabbit: 100%; Zebrafish: 100%; Dog: 77%; Rat: 77%; Bovine: 77%; Guinea pig: 77%



[View online »](#)

Product images:


Lanes: 1. 10 ug human neural cell lysate; 2. 10 ug human non-neural cell lysate; Primary Antibody Dilution: 1: 1000; Secondary Antibody: Goat anti-rabbit IRDye 800 (1hr room temperature); Secondary Antibody Dilution: 1: 15, 000; Gene Name: NOVA2



WB Suggested Anti-NOVA2 Antibody Titration: 1.25 ug/ml; Positive Control: HepG2 cell lysate