

Product datasheet for **TA345798**

NOVA1 Rabbit Polyclonal Antibody

Product data:

Product Type:	Primary Antibodies
Applications:	WB
Recommended Dilution:	WB
Reactivity:	Human
Host:	Rabbit
Isotype:	IgG
Clonality:	Polyclonal
Immunogen:	The immunogen for anti-NOVA1 antibody: synthetic peptide directed towards the C terminal of human NOVA1. Synthetic peptide located within the following region: SKKGEFVPGTRNRKVTITGTPAATQAAQYLITQRITYEQGVRAANPQKVG
Formulation:	Liquid. Purified antibody supplied in 1x PBS buffer with 0.09% (w/v) sodium azide and 2% sucrose. <i>Note that this product is shipped as lyophilized powder to China customers.</i>
Purification:	Affinity Purified
Conjugation:	Unconjugated
Storage:	Store at -20°C as received.
Stability:	Stable for 12 months from date of receipt.
Predicted Protein Size:	52 kDa
Gene Name:	NOVA alternative splicing regulator 1
Database Link:	NP_002506 Entrez Gene 4857 Human P51513



[View online »](#)

Background:

NOVA1 is a neuron-specific RNA-binding protein, a member of the Nova family of paraneoplastic disease antigens, that is recognized and inhibited by paraneoplastic antibodies. These antibodies are found in the sera of patients with paraneoplastic opsoclonus-ataxia, breast cancer, and small cell lung cancer. This gene encodes a neuron-specific RNA-binding protein, a member of the Nova family of paraneoplastic disease antigens, that is recognized and inhibited by paraneoplastic antibodies. These antibodies are found in the sera of patients with paraneoplastic opsoclonus-ataxia, breast cancer, and small cell lung cancer. Alternatively spliced transcripts encoding distinct isoforms have been described.

Synonyms:

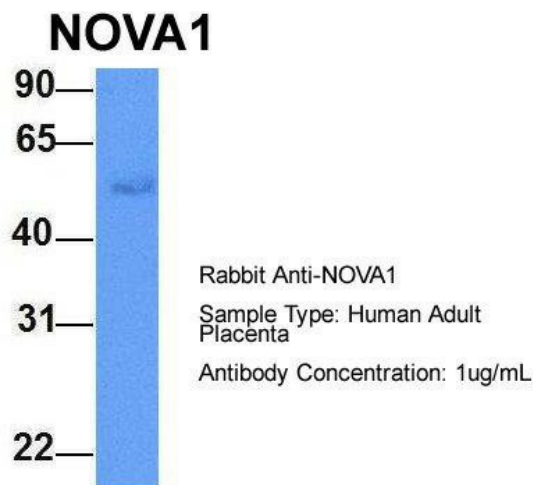
Nova-1

Note:

Immunogen Sequence Homology: Dog: 100%; Pig: 100%; Rat: 100%; Horse: 100%; Human: 100%; Mouse: 100%; Bovine: 100%; Rabbit: 100%; Guinea pig: 100%; Zebrafish: 93%

Product images:


WB Suggested Anti-NOVA1 Antibody Titration: 0.2-1 ug/ml; Positive Control: Hela cell lysate



Host: Rabbit; Target Name: NOVA1; Sample Tissue: Human Adult Placenta; Antibody Dilution: 1.0 ug/ml