

Product datasheet for **TA345797**

NCBP1 Rabbit Polyclonal Antibody

Product data:

Product Type:	Primary Antibodies
Applications:	WB
Recommended Dilution:	WB
Reactivity:	Human
Host:	Rabbit
Isotype:	IgG
Clonality:	Polyclonal
Immunogen:	The immunogen for anti-NCBP1 antibody: synthetic peptide directed towards the N terminal of human NCBP1. Synthetic peptide located within the following region: SRRRHSDENDGGQPHKRRKTS DANETEDHLESLICKVGEKSACSLESNLE
Formulation:	Liquid. Purified antibody supplied in 1x PBS buffer with 0.09% (w/v) sodium azide and 2% sucrose. <i>Note that this product is shipped as lyophilized powder to China customers.</i>
Purification:	Affinity Purified
Conjugation:	Unconjugated
Storage:	Store at -20°C as received.
Stability:	Stable for 12 months from date of receipt.
Predicted Protein Size:	92 kDa
Gene Name:	nuclear cap binding protein subunit 1
Database Link:	NP_002477 Entrez Gene 4686 Human Q09161



[View online »](#)

Background:

NCBP1 is a component of the nuclear cap-binding protein complex (CBC), which binds to the monomethylated 5' cap of nascent pre-mRNA in the nucleoplasm. The encoded protein promotes high-affinity mRNA-cap binding and associates with the CTD of RNA polymerase II. The CBC promotes pre-mRNA splicing, 3'-end processing, RNA nuclear export, and nonsense-mediated mRNA decay. The product of this gene is a component of the nuclear cap-binding protein complex (CBC), which binds to the monomethylated 5' cap of nascent pre-mRNA in the nucleoplasm. The encoded protein promotes high-affinity mRNA-cap binding and associates with the CTD of RNA polymerase II. The CBC promotes pre-mRNA splicing, 3'-end processing, RNA nuclear export, and nonsense-mediated mRNA decay. Publication Note: This RefSeq record includes a subset of the publications that are available for this gene. Please see the Entrez Gene record to access additional publications.

Synonyms:

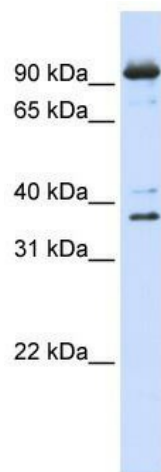
CBP80; NCBP; Sto1

Note:

Immunogen Sequence Homology: Dog: 100%; Pig: 100%; Human: 100%; Bovine: 100%; Rat: 93%; Mouse: 93%; Rabbit: 88%

Protein Pathways:

Spliceosome

Product images:

WB Suggested Anti-NCBP1 Antibody Titration:
0.2-1 ug/ml; ELISA Titer: 1: 62500; Positive
Control: 293T cell lysate