

Product datasheet for **TA345796**

ISG20 Rabbit Polyclonal Antibody

Product data:

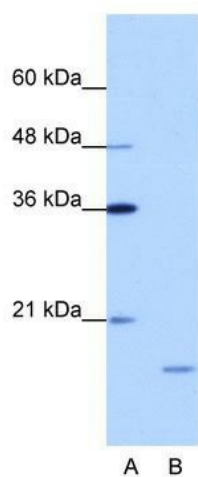
Product Type:	Primary Antibodies
Applications:	WB
Recommended Dilution:	WB
Reactivity:	Human
Host:	Rabbit
Isotype:	IgG
Clonality:	Polyclonal
Immunogen:	The immunogen for anti-ISG20 antibody: synthetic peptide directed towards the N terminal of human ISG20. Synthetic peptide located within the following region: GAVLYDKFIRPEGEITDYRTRVSGVTPQHMGATPFAVARLEILQLLK GK
Formulation:	Liquid. Purified antibody supplied in 1x PBS buffer with 0.09% (w/v) sodium azide and 2% sucrose. <i>Note that this product is shipped as lyophilized powder to China customers.</i>
Purification:	Protein A purified
Conjugation:	Unconjugated
Storage:	Store at -20°C as received.
Stability:	Stable for 12 months from date of receipt.
Predicted Protein Size:	20 kDa
Gene Name:	interferon stimulated exonuclease gene 20kDa
Database Link:	NP_002192 Entrez Gene 3669 Human Q96AZ6
Background:	ISG20 belongs to the the exonuclease superfamily. It is exonuclease with specificity for single-stranded RNA and, to a lesser extent for DNA. It degrades RNA at a rate that is approximately 35-fold higher than its rate for single-stranded DNA. It is involved in the antiviral function of IFN against RNA viruses.
Synonyms:	CD25; HEM45



[View online »](#)

Note: Immunogen Sequence Homology: Dog: 100%; Pig: 100%; Human: 100%; Rat: 93%; Mouse: 93%; Bovine: 93%; Rabbit: 93%; Guinea pig: 93%; Horse: 79%

Product images:



WB Suggested Anti-ISG20 Antibody Titration: 1.25 ug/ml; ELISA Titer: 1: 1562500; Positive Control: Daudi cell lysate; ISG20 is strongly supported by BioGPS gene expression data to be expressed in Human Daudi cells