

## Product datasheet for **TA345795**

### ISG20 Rabbit Polyclonal Antibody

#### Product data:

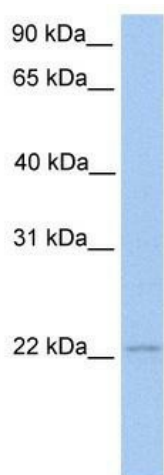
Product Type:	Primary Antibodies
Applications:	WB
Recommended Dilution:	WB
Reactivity:	Human
Host:	Rabbit
Isotype:	IgG
Clonality:	Polyclonal
Immunogen:	The immunogen for anti-ISG20 antibody: synthetic peptide directed towards the middle region of human ISG20. Synthetic peptide located within the following region: TSTDRLWREAKLDHCRRVSLRVLSERLLHKS IQNSLLGHSSVEDARATM
Formulation:	Liquid. Purified antibody supplied in 1x PBS buffer with 0.09% (w/v) sodium azide and 2% sucrose. <i>Note that this product is shipped as lyophilized powder to China customers.</i>
Purification:	Affinity Purified
Conjugation:	Unconjugated
Storage:	Store at -20°C as received.
Stability:	Stable for 12 months from date of receipt.
Predicted Protein Size:	20 kDa
Gene Name:	interferon stimulated exonuclease gene 20kDa
Database Link:	<a href="#">NP_002192</a> <a href="#">Entrez Gene 3669 Human</a> <a href="#">Q96AZ6</a>
Background:	ISG20 belongs to the the exonuclease superfamily. It is exonuclease with specificity for single-stranded RNA and, to a lesser extent for DNA. It degrades RNA at a rate that is approximately 35-fold higher than its rate for single-stranded DNA. It is involved in the antiviral function of IFN against RNA viruses.
Synonyms:	CD25; HEM45



[View online »](#)

**Note:** Immunogen Sequence Homology: Pig: 100%; Human: 100%; Rat: 92%; Horse: 86%; Rabbit: 86%; Dog: 85%; Guinea pig: 85%; Bovine: 79%

### Product images:



WB Suggested Anti-ISG20 Antibody Titration: 0.2-1 ug/ml; Positive Control: Jurkat cell lysate