

Product datasheet for **TA345789**

GRSF1 Rabbit Polyclonal Antibody

Product data:

Product Type:	Primary Antibodies
Applications:	WB
Recommended Dilution:	WB
Reactivity:	Human
Host:	Rabbit
Isotype:	IgG
Clonality:	Polyclonal
Immunogen:	The immunogen for anti-GRSF1 antibody: synthetic peptide directed towards the middle region of human GRSF1. Synthetic peptide located within the following region: IRNGENGIHFLLNRDGRRGDALIEMESEQDVQKALEKHRMYMGQRYVEV
Formulation:	Liquid. Purified antibody supplied in 1x PBS buffer with 0.09% (w/v) sodium azide and 2% sucrose. <i>Note that this product is shipped as lyophilized powder to China customers.</i>
Purification:	Affinity Purified
Conjugation:	Unconjugated
Storage:	Store at -20°C as received.
Stability:	Stable for 12 months from date of receipt.
Predicted Protein Size:	53 kDa
Gene Name:	G-rich RNA sequence binding factor 1
Database Link:	NP_002083 Entrez Gene 2926 Human Q12849



[View online »](#)

Background:

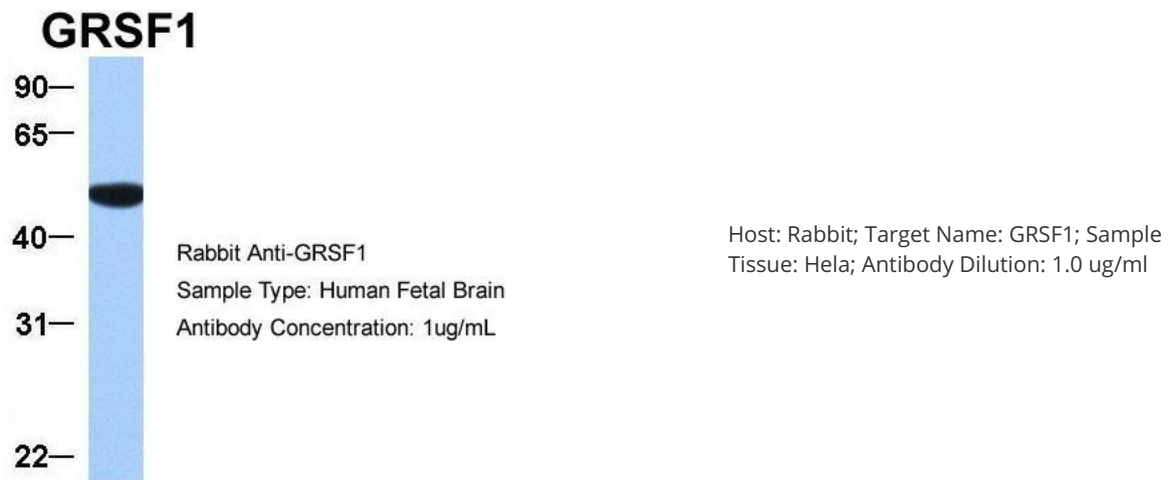
GRSF1 is a cellular protein that binds RNAs containing the G-rich element. Using indirect immunofluorescence microscopy this protein was found to be localized in the cytoplasm. The protein encoded by this gene is a cellular protein that binds RNAs containing the G-rich element. Using indirect immunofluorescence microscopy this protein was found to be localized in the cytoplasm. Several alternatively spliced transcript variants of this gene have been described, but the full-length nature of some of these variants has not been determined. The protein encoded by this gene is a cellular protein that binds RNAs containing the G-rich element. The protein is localized in the cytoplasm, and has been shown to stimulate translation of viral mRNAs in vitro. Multiple transcript variants encoding different isoforms have been found for this gene.

Synonyms:

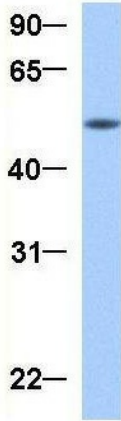
FLJ13125

Note:

Immunogen Sequence Homology: Dog: 100%; Pig: 100%; Rat: 100%; Horse: 100%; Human: 100%; Mouse: 100%; Bovine: 100%; Rabbit: 100%; Guinea pig: 100%

Product images:

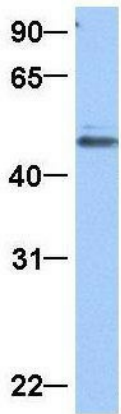
GRSF1



Rabbit Anti-GRSF1
Sample Type: Human Fetal Heart
Antibody Concentration: 1ug/mL

Host: Rabbit; Target Name: GRSF1; Sample
Tissue: Human Fetal Heart; Antibody Dilution: 1.0
ug/ml

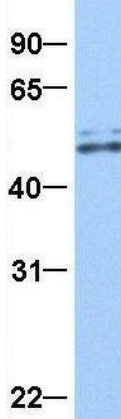
GRSF1



Rabbit Anti-GRSF1
Sample Type: Human Jurkat
Antibody Concentration: 1ug/mL

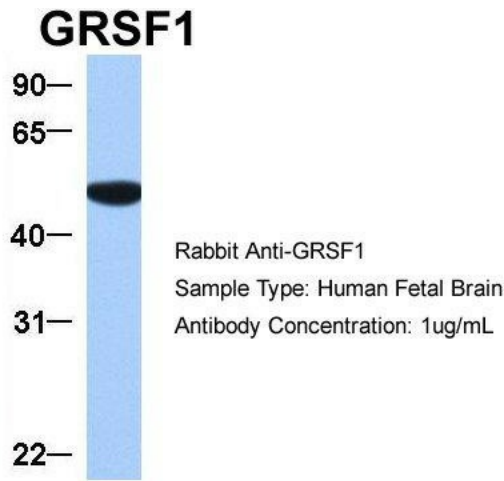
Host: Rabbit; Target Name: GRSF1; Sample
Tissue: Jurkat; Antibody Dilution: 1.0 ug/ml. GRSF1
is strongly supported by BioGPS gene expression
data to be expressed in Jurkat

GRSF1

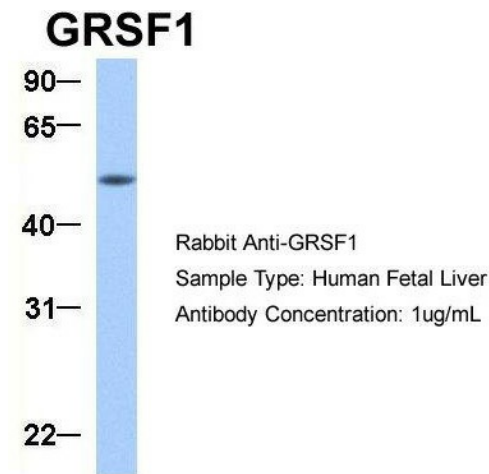


Rabbit Anti-GRSF1
Sample Type: Human HeLa
Antibody Concentration: 1ug/mL

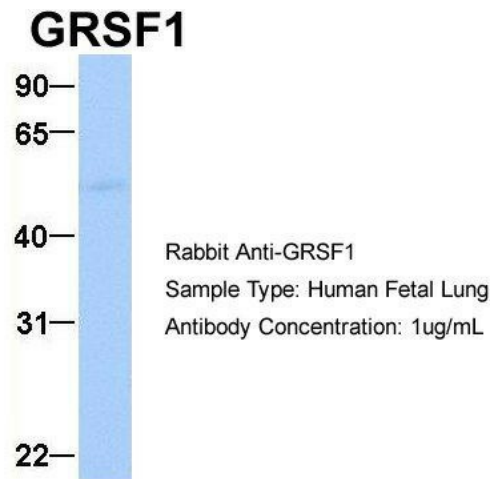
Host: Rabbit; Target Name: GRSF1; Sample
Tissue: HeLa; Antibody Dilution: 1.0 ug/ml



Host: Rabbit; Target Name: GRSF1; Sample Tissue: Human Fetal Brain; Antibody Dilution: 1.0 ug/ml

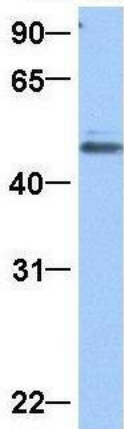


Host: Rabbit; Target Name: GRSF1; Sample Tissue: Human Fetal Liver; Antibody Dilution: 1.0 ug/ml



Host: Rabbit; Target Name: GRSF1; Sample Tissue: Human Fetal Lung; Antibody Dilution: 1.0 ug/ml

GRSF1



Rabbit Anti-GRSF1
 Sample Type: Human Jurkat
 Antibody Concentration: 1ug/mL

Host: Rabbit; Target Name: GRSF1; Sample Tissue: Jurkat; Antibody Dilution: 1.0 ug/ml; GRSF1 is strongly supported by BioGPS gene expression data to be expressed in Jurkat



WB Suggested Anti-GRSF1 Antibody Titration: 0.2-1 ug/ml; Positive Control: Hela cell lysate. GRSF1 is strongly supported by BioGPS gene expression data to be expressed in Human HeLa cells