

## Product datasheet for **TA345788**

### GRSF1 Rabbit Polyclonal Antibody

#### Product data:

Product Type:	Primary Antibodies
Applications:	WB
Recommended Dilution:	WB
Reactivity:	Human
Host:	Rabbit
Isotype:	IgG
Clonality:	Polyclonal
Immunogen:	The immunogen for anti-GRSF1 antibody: synthetic peptide directed towards the N terminal of human GRSF1. Synthetic peptide located within the following region: SCRRTGAACLPFYSAASYPALRASLLPQSLAAAAVPTRSYSQESKTTYL
Formulation:	Liquid. Purified antibody supplied in 1x PBS buffer with 0.09% (w/v) sodium azide and 2% sucrose. <i>Note that this product is shipped as lyophilized powder to China customers.</i>
Purification:	Protein A purified
Conjugation:	Unconjugated
Storage:	Store at -20°C as received.
Stability:	Stable for 12 months from date of receipt.
Predicted Protein Size:	47 kDa
Gene Name:	G-rich RNA sequence binding factor 1
Database Link:	<a href="#">NP_002083</a> <a href="#">Entrez Gene 2926 Human</a> <a href="#">Q12849</a>



[View online »](#)

**Background:**

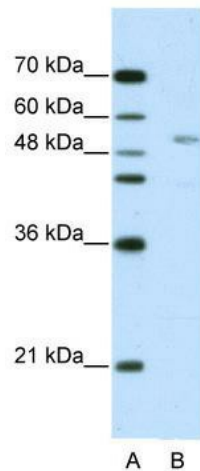
GRSF1 is a cellular protein that binds RNAs containing the G-rich element. Using indirect immunofluorescence microscopy this protein was found to be localized in the cytoplasm. The protein encoded by this gene is a cellular protein that binds RNAs containing the G-rich element. Using indirect immunofluorescence microscopy this protein was found to be localized in the cytoplasm. Several alternatively spliced transcript variants of this gene have been described, but the full-length nature of some of these variants has not been determined.

**Synonyms:**

FLJ13125

**Note:**

Immunogen Sequence Homology: Human: 100%; Mouse: 85%; Bovine: 85%; Pig: 77%; Rat: 77%

**Product images:**

WB Suggested Anti-GRSF1 Antibody Titration: 2.5 ug/ml; ELISA Titer: 1: 62500; Positive Control: HepG2 cell lysate