

## Product datasheet for **TA345787**

### EIF4A2 Rabbit Polyclonal Antibody

#### Product data:

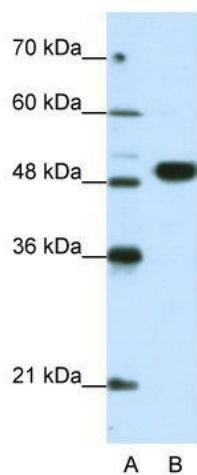
Product Type:	Primary Antibodies
Applications:	WB
Recommended Dilution:	WB
Reactivity:	Human
Host:	Rabbit
Isotype:	IgG
Clonality:	Polyclonal
Immunogen:	The immunogen for anti-EIF4A2 antibody: synthetic peptide directed towards the N terminal of human EIF4A2. Synthetic peptide located within the following region: MSGGSADYNREHGGPEGMDPDGVIESNWNEIVDNFDDMNLKESLLRGIYA
Formulation:	Liquid. Purified antibody supplied in 1x PBS buffer with 0.09% (w/v) sodium azide and 2% sucrose. <i>Note that this product is shipped as lyophilized powder to China customers.</i>
Purification:	Affinity Purified
Conjugation:	Unconjugated
Storage:	Store at -20°C as received.
Stability:	Stable for 12 months from date of receipt.
Predicted Protein Size:	45 kDa
Gene Name:	eukaryotic translation initiation factor 4A2
Database Link:	<a href="#">NP_001958</a> <a href="#">Entrez Gene 1974 Human Q14240</a>
Background:	EIF4A2 contains 1 helicase C-terminal domain and 1 helicase ATP-binding domain. It belongs to the DEAD box helicase family. eIF4A subfamily. In the current model of translation initiation, eIF4A unwinds RNA secondary structures in the 5' untranslated region of mRNAs which is necessary to allow efficient binding of the small ribosomal subunit, and subsequent scanning for the initiator codon.
Synonyms:	BM-010; DDX2B; eIF-4A-II; EIF4A; eIF4A-II; EIF4F



[View online »](#)

**Note:** Immunogen Sequence Homology: Dog: 100%; Pig: 100%; Rat: 100%; Horse: 100%; Human: 100%; Mouse: 100%; Bovine: 100%; Rabbit: 100%; Guinea pig: 93%

### Product images:



WB Suggested Anti-EIF4A2 Antibody Titration: 0.2-1 ug/ml; ELISA Titer: 1: 312500; Positive Control: Jurkat cell lysate