

## Product datasheet for **TA345784**

### **APOBEC1 Rabbit Polyclonal Antibody**

#### **Product data:**

Product Type:	Primary Antibodies
Applications:	WB
Recommended Dilution:	WB
Reactivity:	Human
Host:	Rabbit
Isotype:	IgG
Clonality:	Polyclonal
Immunogen:	The immunogen for anti-APOBEC1 antibody: synthetic peptide directed towards the N terminal of human APOBEC1. Synthetic peptide located within the following region: TSEKGPSTGDPTLRRRIEPWEFDVFYDPRELKAEACLLYEIKWGMSRKIW
Formulation:	Liquid. Purified antibody supplied in 1x PBS buffer with 0.09% (w/v) sodium azide and 2% sucrose. <i>Note that this product is shipped as lyophilized powder to China customers.</i>
Purification:	Affinity Purified
Conjugation:	Unconjugated
Storage:	Store at -20°C as received.
Stability:	Stable for 12 months from date of receipt.
Predicted Protein Size:	28 kDa
Gene Name:	apolipoprotein B mRNA editing enzyme catalytic subunit 1
Database Link:	<a href="#">NP_001635</a> <a href="#">Entrez Gene 339 Human</a> <a href="#">P41238</a>



[View online »](#)

**Background:**

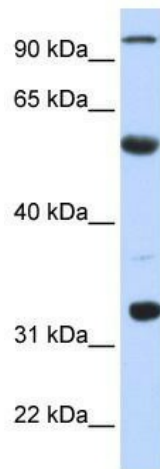
APOBEC1 is a member of the cytidine deaminase enzyme family. The protein forms a multiple-protein editing holoenzyme with APOBEC1 complementation factor (ACF) and APOBEC1 stimulating protein (ASP). This holoenzyme is involved in the editing of C-to-U nucleotide bases in apolipoprotein B and neurofibromatosis-1 mRNAs. This gene encodes a member of the cytidine deaminase enzyme family. The encoded protein forms a multiple-protein editing holoenzyme with APOBEC1 complementation factor (ACF) and APOBEC1 stimulating protein (ASP). This holoenzyme is involved in the editing of C-to-U nucleotide bases in apolipoprotein B and neurofibromatosis-1 mRNAs. Publication Note: This RefSeq record includes a subset of the publications that are available for this gene. Please see the Entrez Gene record to access additional publications.

**Synonyms:**

APOBEC-1; BEDP; CDAR1; HEPR

**Note:**

Immunogen Sequence Homology: Human: 100%; Pig: 86%; Rat: 86%; Mouse: 86%; Dog: 79%; Horse: 79%; Rabbit: 79%

**Product images:**

WB Suggested Anti-APOBEC1 Antibody Titration:  
0.2-1 ug/ml; ELISA Titer: 1: 312500; Positive  
Control: Human Liver