

Product datasheet for **TA345777**

DAP5 (EIF4G2) Rabbit Polyclonal Antibody

Product data:

Product Type:	Primary Antibodies
Applications:	WB
Recommended Dilution:	WB
Reactivity:	Human, Chicken, Turkey
Host:	Rabbit
Isotype:	IgG
Clonality:	Polyclonal
Immunogen:	The immunogen for anti-EIF4G2 antibody: synthetic peptide directed towards the C terminal of human EIF4G2. Synthetic peptide located within the following region: KGFVNILMTSFLQYISSEVNPPSDETDSSSAPSKEQLEQEKQLLSFKPV
Formulation:	Liquid. Purified antibody supplied in 1x PBS buffer with 0.09% (w/v) sodium azide and 2% sucrose. <i>Note that this product is shipped as lyophilized powder to China customers.</i>
Purification:	Affinity Purified
Conjugation:	Unconjugated
Storage:	Store at -20°C as received.
Stability:	Stable for 12 months from date of receipt.
Predicted Protein Size:	39 kDa
Gene Name:	eukaryotic translation initiation factor 4 gamma 2
Database Link:	NP_001036024 Entrez Gene 1982 Human P78344



[View online »](#)

Background:

Translation initiation is mediated by specific recognition of the cap structure by eukaryotic translation initiation factor 4F (eIF4F), which is a cap binding protein complex that consists of three subunits: eIF4A, eIF4E and eIF4G. EIF4G2 shares similarity with the C-terminal region of eIF4G that contains the binding sites for eIF4A and eIF3; eIF4G, in addition, contains a binding site for eIF4E at the N-terminus. Unlike eIF4G, which supports cap-dependent and independent translation, EIF4G2 functions as a general repressor of translation by forming translationally inactive complexes.

Synonyms:

AAG1; DAP5; NAT1; P97

Note:

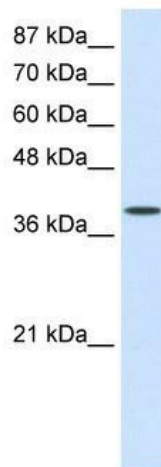
Immunogen Sequence Homology: Dog: 100%; Pig: 100%; Horse: 100%; Human: 100%; Bovine: 100%; Rabbit: 100%; Rat: 93%; Mouse: 93%; Guinea pig: 93%

Protein Families:

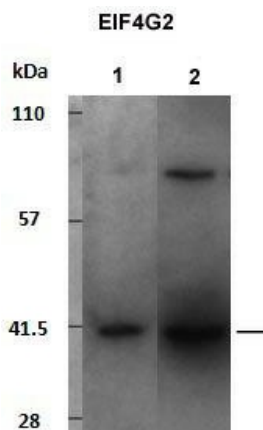
Transcription Factors

Protein Pathways:

Viral myocarditis

Product images:


WB Suggested Anti-EIF4G2 Antibody Titration: 0.2-1 ug/ml; Positive Control: HepG2 cell lysate



Sample Type: 1. IAH30 cells (0.5x10⁶ cells loaded); 2. DF-1 cells (0.5x10⁶ cells loaded); Primary Dilution: 1: 1000; Secondary Antibody: Goat anti-rabbit IgG (whole molecule) peroxidase; Secondary Dilution: 1: 10, 000;