

## Product datasheet for **TA345774**

### DKC1 Rabbit Polyclonal Antibody

#### Product data:

Product Type:	Primary Antibodies
Applications:	WB
Recommended Dilution:	WB
Reactivity:	Human
Host:	Rabbit
Isotype:	IgG
Clonality:	Polyclonal
Immunogen:	The immunogen for anti-DKC1 antibody: synthetic peptide directed towards the N terminal of human DKC1. Synthetic peptide located within the following region: EFLIKPESKVAKLDTSQWPLLLKNFDKLNVRTTHYTPLACGSNPLKREIG
Formulation:	Liquid. Purified antibody supplied in 1x PBS buffer with 0.09% (w/v) sodium azide and 2% sucrose. <i>Note that this product is shipped as lyophilized powder to China customers.</i>
Purification:	Affinity Purified
Conjugation:	Unconjugated
Storage:	Store at -20°C as received.
Stability:	Stable for 12 months from date of receipt.
Predicted Protein Size:	58 kDa
Gene Name:	dyskerin pseudouridine synthase 1
Database Link:	<a href="#">NP_001354</a> <a href="#">Entrez Gene 1736 Human</a> <a href="#">O60832</a>
Background:	This gene is a member of the H/ACA snoRNPs (small nucleolar ribonucleoproteins) gene family. snoRNPs are involved in various aspects of rRNA processing and modification and have been classified into two families: C/D and H/ACA. The H/ACA snoRNPs also incl
Synonyms:	CBF5; DKC; DKCX; NAP57; NOLA4; XAP101

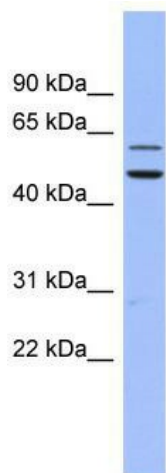


[View online »](#)

**Note:** Immunogen Sequence Homology: Dog: 100%; Pig: 100%; Rat: 100%; Horse: 100%; Human: 100%; Sheep: 100%; Bovine: 100%; Rabbit: 100%; Guinea pig: 100%; Mouse: 93%; Yeast: 86%; Zebrafish: 86%; Goat: 79%

**Protein Families:** Druggable Genome

**Product images:**



WB Suggested Anti-DKC1 Antibody Titration: 0.2-1 ug/ml; ELISA Titer: 1: 312500; Positive Control: Human Small Intestine