

Product datasheet for **TA345769**

Cleavage stimulation factor 2 (CSTF2) Rabbit Polyclonal Antibody

Product data:

Product Type:	Primary Antibodies
Applications:	WB
Recommended Dilution:	WB
Reactivity:	Human
Host:	Rabbit
Isotype:	IgG
Clonality:	Polyclonal
Immunogen:	The immunogen for anti-CSTF2 antibody: synthetic peptide directed towards the N terminal of human CSTF2. Synthetic peptide located within the following region: VDPEIALKILHRQTNIPTLIAGNPQPVHGAGPGSGSNVSMNQNPQAPQA
Formulation:	Liquid. Purified antibody supplied in 1x PBS buffer with 0.09% (w/v) sodium azide and 2% sucrose. <i>Note that this product is shipped as lyophilized powder to China customers.</i>
Purification:	Affinity Purified
Conjugation:	Unconjugated
Storage:	Store at -20°C as received.
Stability:	Stable for 12 months from date of receipt.
Predicted Protein Size:	61 kDa
Gene Name:	cleavage stimulation factor subunit 2
Database Link:	NP_001316 Entrez Gene 1478 Human P33240



[View online »](#)

Background:

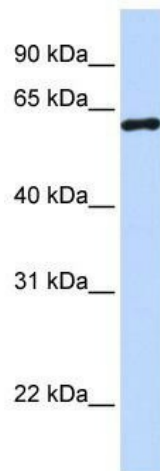
CSTF2 is a nuclear protein with an RRM (RNA recognition motif) domain. The protein is a member of the cleavage stimulation factor (CSTF) complex that is involved in the 3' end cleavage and polyadenylation of pre-mRNAs. Specifically, this protein binds GU-rich elements within the 3'-untranslated region of mRNAs. This gene encodes a nuclear protein with an RRM (RNA recognition motif) domain. The protein is a member of the cleavage stimulation factor (CSTF) complex that is involved in the 3' end cleavage and polyadenylation of pre-mRNAs. Specifically, this protein binds GU-rich elements within the 3'-untranslated region of mRNAs. Publication Note: This RefSeq record includes a subset of the publications that are available for this gene. Please see the Entrez Gene record to access additional publications.

Synonyms:

CstF-64

Note:

Immunogen Sequence Homology: Human: 100%; Rabbit: 100%; Rat: 93%; Pig: 86%; Horse: 86%; Mouse: 86%; Guinea pig: 86%; Dog: 85%; Bovine: 85%

Product images:

WB Suggested Anti-CSTF2 Antibody Titration: 0.2-1 ug/ml; ELISA Titer: 1: 62500; Positive Control: 293T cell lysate; CSTF2 is supported by BioGPS gene expression data to be expressed in HEK293T