

Product datasheet for **TA345767**

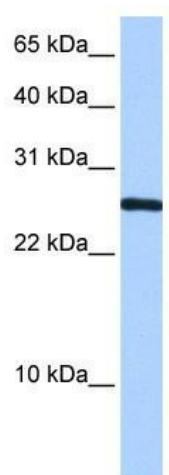
CIRBP Rabbit Polyclonal Antibody

Product data:

Product Type:	Primary Antibodies
Applications:	WB
Recommended Dilution:	WB
Reactivity:	Human
Host:	Rabbit
Isotype:	IgG
Clonality:	Polyclonal
Immunogen:	The immunogen for anti-CIRBP antibody: synthetic peptide directed towards the N terminal of human CIRBP. Synthetic peptide located within the following region: MASDEGKLFVGGLSFDTNEQSLEQVFSKYGQISEVWVKDRETQRSRGFG
Formulation:	Liquid. Purified antibody supplied in 1x PBS buffer with 0.09% (w/v) sodium azide and 2% sucrose. <i>Note that this product is shipped as lyophilized powder to China customers.</i>
Purification:	Affinity Purified
Conjugation:	Unconjugated
Storage:	Store at -20°C as received.
Stability:	Stable for 12 months from date of receipt.
Predicted Protein Size:	19 kDa
Gene Name:	cold inducible RNA binding protein
Database Link:	NP_001271 Entrez Gene 1153 Human Q14011
Background:	CIRBP contains 1 RRM (RNA recognition motif) domain. It seems to play an essential role in cold-induced suppression of cell proliferation.
Synonyms:	CIRP
Note:	Immunogen Sequence Homology: Dog: 100%; Pig: 100%; Rat: 100%; Human: 100%; Bovine: 100%; Mouse: 93%; Guinea pig: 93%; Zebrafish: 79%



[View online »](#)

Product images:

WB Suggested Anti-CIRBP Antibody Titration: 0.2-1 ug/ml; Positive Control: HepG2 cell lysate