

Product datasheet for TA345766

CIRBP Rabbit Polyclonal Antibody

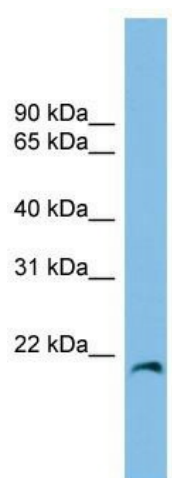
Product data:

Product Type:	Primary Antibodies
Applications:	WB
Recommended Dilution:	WB
Reactivity:	Human
Host:	Rabbit
Isotype:	IgG
Clonality:	Polyclonal
Immunogen:	The immunogen for anti-CIRBP antibody: synthetic peptide directed towards the middle region of human CIRBP. Synthetic peptide located within the following region: GYGGNRFESRSGGYGGSRDYSSRSQSGGYSDRSSGGSYRDSYDSYATHN
Formulation:	Liquid. Purified antibody supplied in 1x PBS buffer with 0.09% (w/v) sodium azide and 2% sucrose. <i>Note that this product is shipped as lyophilized powder to China customers.</i>
Purification:	Affinity Purified
Conjugation:	Unconjugated
Storage:	Store at -20°C as received.
Stability:	Stable for 12 months from date of receipt.
Predicted Protein Size:	19 kDa
Gene Name:	cold inducible RNA binding protein
Database Link:	NP_001271 Entrez Gene 1153 Human Q14011
Background:	CIRBP contains 1 RRM (RNA recognition motif) domain. It seems to play an essential role in cold-induced suppression of cell proliferation.
Synonyms:	CIRP
Note:	Immunogen Sequence Homology: Human: 100%; Dog: 92%; Pig: 92%; Bovine: 92%; Rat: 85%; Guinea pig: 77%



[View online »](#)

Product images:



WB Suggested Anti-CIRBP Antibody Titration: 0.2-1 ug/ml ELISA Titer: 1: 312500 Positive Control: A549