

Product datasheet for **TA345765**

CDC5L Rabbit Polyclonal Antibody

Product data:

Product Type:	Primary Antibodies
Applications:	IHC, WB
Recommended Dilution:	WB
Reactivity:	Human
Host:	Rabbit
Isotype:	IgG
Clonality:	Polyclonal
Immunogen:	The immunogen for anti-CDC5L antibody: synthetic peptide directed towards the middle region of human CDC5L. Synthetic peptide located within the following region: LHWYTGEGMDEMEFTEAESNMNDLVSEYQQYQDATADEQGEFEEEEGEDE
Formulation:	Liquid. Purified antibody supplied in 1x PBS buffer with 0.09% (w/v) sodium azide and 2% sucrose. <i>Note that this product is shipped as lyophilized powder to China customers.</i>
Purification:	Affinity Purified
Conjugation:	Unconjugated
Storage:	Store at -20°C as received.
Stability:	Stable for 12 months from date of receipt.
Predicted Protein Size:	92 kDa
Gene Name:	cell division cycle 5 like
Database Link:	NP_001244 Entrez Gene 988 Human Q99459



[View online »](#)

Background:

CDC5L shares a significant similarity with *Schizosaccharomyces pombe* *cdc5* gene product, which is a cell cycle regulator important for G2/M transition. CDC5L has been demonstrated to act as a positive regulator of cell cycle G2/M progression. It was also found to be an essential component of a non-snRNA spliceosome, which contains at least five additional protein factors and is required for the second catalytic step of pre-mRNA splicing. The protein encoded by this gene shares a significant similarity with *Schizosaccharomyces pombe* *cdc5* gene product, which is a cell cycle regulator important for G2/M transition. This protein has been demonstrated to act as a positive regulator of cell cycle G2/M progression. It was also found to be an essential component of a non-snRNA spliceosome, which contains at least five additional protein factors and is required for the second catalytic step of pre-mRNA splicing. Publication Note: This RefSeq record includes a subset of the publications that are available for this gene. Please see the Entrez Gene record to access additional publications.

Synonyms:

CDC5; CDC5-LIKE; CEF1; dj319D22.1; PCDC5RP

Note:

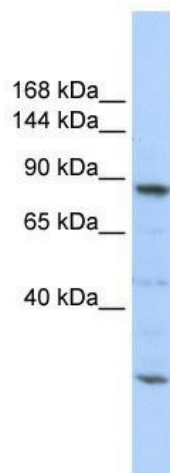
Immunogen Sequence Homology: Dog: 100%; Pig: 100%; Rat: 100%; Goat: 100%; Horse: 100%; Human: 100%; Mouse: 100%; Bovine: 100%; Rabbit: 100%; Zebrafish: 100%; Guinea pig: 100%; Yeast: 90%

Protein Families:

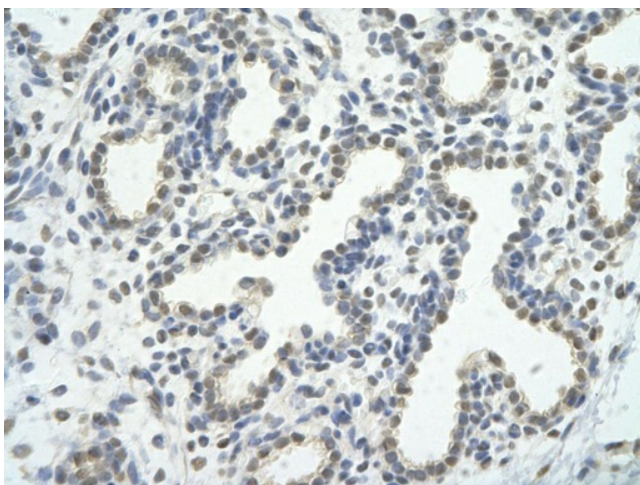
Transcription Factors

Protein Pathways:

Spliceosome

Product images:

WB Suggested Anti-CDC5L Antibody Titration: 0.2-1 ug/ml; ELISA Titer: 1: 312500; Positive Control: 721_B cell lysate; CDC5L is supported by BioGPS gene expression data to be expressed in 721_B



Rabbit Anti-CDC5L antibody; Paraffin Embedded Tissue: Human Lung cell Cellular Data: alveolar cell of renal tubule; Antibody Concentration: 4.0-8.0 ug/ml; Magnification: 400X