

Product datasheet for **TA345762**

RED1 (ADARB1) Rabbit Polyclonal Antibody

Product data:

Product Type:	Primary Antibodies
Applications:	WB
Recommended Dilution:	WB
Reactivity:	Human, Mouse
Host:	Rabbit
Isotype:	IgG
Clonality:	Polyclonal
Immunogen:	The immunogen for anti-ADARB1 antibody: synthetic peptide directed towards the N terminal of human ADARB1. Synthetic peptide located within the following region: QLSNGGGGGPGRKRPLEEGSNGHSHKYRLKRRKTPGPVLPKNALMQLNEI
Formulation:	Liquid. Purified antibody supplied in 1x PBS buffer with 0.09% (w/v) sodium azide and 2% sucrose. <i>Note that this product is shipped as lyophilized powder to China customers.</i>
Purification:	Protein A purified
Conjugation:	Unconjugated
Storage:	Store at -20°C as received.
Stability:	Stable for 12 months from date of receipt.
Predicted Protein Size:	77 kDa
Gene Name:	adenosine deaminase, RNA specific B1
Database Link:	NP_001103 Entrez Gene 110532 Mouse Entrez Gene 104 Human P78563



[View online »](#)

Background:

ADARB1 is an enzyme responsible for pre-mRNA editing of the glutamate receptor subunit B by site-specific deamination of adenosines. Studies in rat found that this enzyme acted on its own pre-mRNA molecules to convert an AA dinucleotide to an AI dinucleotide which resulted in a new splice site. This gene encodes the enzyme responsible for pre-mRNA editing of the glutamate receptor subunit B by site-specific deamination of adenosines. Studies in rat found that this enzyme acted on its own pre-mRNA molecules to convert an AA dinucleotide to an AI dinucleotide which resulted in a new splice site. Alternative splicing of this gene results in several transcript variants, some of which have been characterized by the presence or absence of an ALU cassette insert and a short or long C-terminal region.

Synonyms:

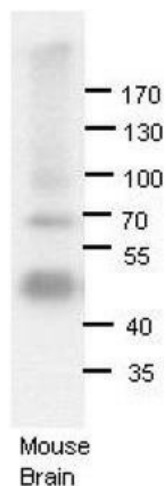
ADAR2; DRABA2; DRADA2; RED1

Note:

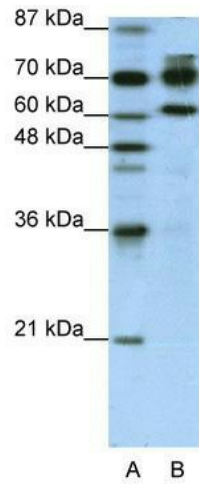
Immunogen Sequence Homology: Pig: 100%; Rat: 100%; Human: 100%; Mouse: 100%; Guinea pig: 100%; Dog: 93%; Horse: 93%; Rabbit: 93%; Zebrafish: 92%; Bovine: 83%

Protein Families:

Druggable Genome

Product images:

ADARB1 antibody - N-terminal region validated by WB using Mouse brains at 1: 1000.



WB Suggested Anti-ADARB1 Antibody Titration:
1.25 ug/ml; ELISA Titer: 1: 1562500; Positive
Control: HepG2 cell lysate