

Product datasheet for **TA345761**

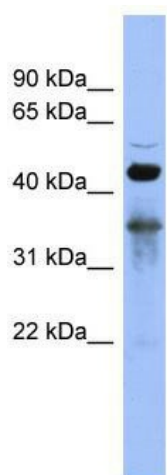
RBFOX2 Rabbit Polyclonal Antibody

Product data:

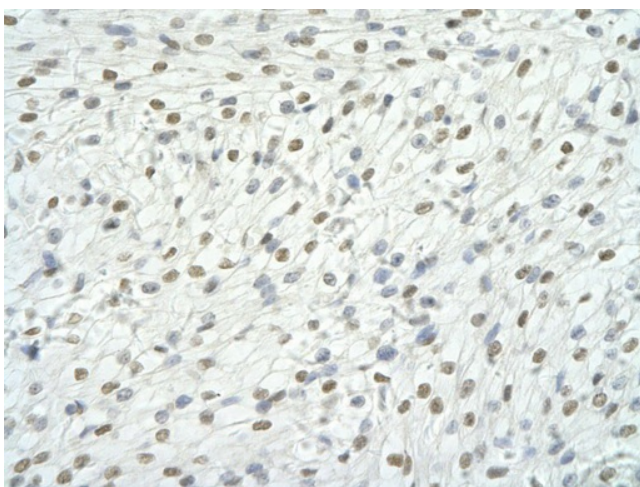
Product Type:	Primary Antibodies
Applications:	IHC, WB
Recommended Dilution:	WB
Reactivity:	Human
Host:	Rabbit
Isotype:	IgG
Clonality:	Polyclonal
Immunogen:	The immunogen for anti-RBM9 antibody: synthetic peptide directed towards the middle region of human RBM9. Synthetic peptide located within the following region: TAAAAAAAYS DGYGRVYTADPYHALAPAASYGVGAVASLYRGGYSRFAP
Formulation:	Liquid. Purified antibody supplied in 1x PBS buffer with 0.09% (w/v) sodium azide and 2% sucrose. <i>Note that this product is shipped as lyophilized powder to China customers.</i>
Purification:	Affinity Purified
Conjugation:	Unconjugated
Storage:	Store at -20°C as received.
Stability:	Stable for 12 months from date of receipt.
Predicted Protein Size:	40 kDa
Gene Name:	RNA binding protein, fox-1 homolog 2
Database Link:	NP_001026865 Entrez Gene 23543 Human O43251
Background:	RBM9 is a RNA-binding protein that seems to act as a coregulatory factor of ER-alpha.
Synonyms:	dj106l20.3; Fox-2; FOX2; fxx; HNRBP2; HRNBP2; RBM9; RTA
Note:	Immunogen Sequence Homology: Dog: 100%; Pig: 100%; Rat: 100%; Horse: 100%; Human: 100%; Mouse: 100%; Bovine: 100%; Rabbit: 100%; Guinea pig: 100%; Zebrafish: 93%
Protein Families:	Druggable Genome, Transcription Factors



[View online »](#)

Product images:

WB Suggested Anti-RBM9 Antibody Titration: 0.2-1 ug/ml; ELISA Titer: 1: 62500; Positive Control: NCI-H226 cell lysate. RBFOX2 is supported by BioGPS gene expression data to be expressed in NCIH226



Rabbit Anti-RBM9 antibody; Paraffin Embedded Tissue: Human Heart cell Cellular Data: cardiac cell of renal tubule; Antibody Concentration: 4.0-8.0 ug/ml; Magnification: 400X