

Product datasheet for **TA345758**

KIAA0020 (PUM3) Rabbit Polyclonal Antibody

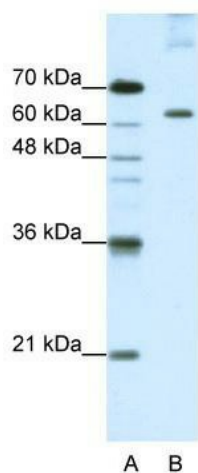
Product data:

Product Type:	Primary Antibodies
Applications:	IHC, WB
Recommended Dilution:	WB, IHC
Reactivity:	Human
Host:	Rabbit
Isotype:	IgG
Clonality:	Polyclonal
Immunogen:	The immunogen for anti-KIAA0020 antibody: synthetic peptide directed towards the N terminal of human KIAA0020. Synthetic peptide located within the following region: GKKGVKQFKNKQQGDKSPKNKFQPANKFNKRRKFQPDGRSDESAKKPKW
Formulation:	Liquid. Purified antibody supplied in 1x PBS buffer with 0.09% (w/v) sodium azide and 2% sucrose. <i>Note that this product is shipped as lyophilized powder to China customers.</i>
Purification:	Protein A purified
Conjugation:	Unconjugated
Storage:	Store at -20°C as received.
Stability:	Stable for 12 months from date of receipt.
Predicted Protein Size:	71 kDa
Gene Name:	pumilio RNA binding family member 3
Database Link:	NP_001026861 Entrez Gene 9933 Human Q15397
Background:	KIAA0020 contains 6 pumilio repeats and 1PUM-HD domain. The function remains unknown.
Synonyms:	HBV X-transactivated gene 5 protein; HLA-HA8; KIAA0020 protein; MGC8749; minor histocompatibility antigen HA-8; PEN; penguin homolog; protein 5 transactivated by hepatitis B virus X antigen (HBxAg); PUF6; RP11-526D20.2; XTP5
Note:	Immunogen Sequence Homology: Human: 100%; Dog: 93%; Pig: 93%; Rat: 86%; Bovine: 86%; Rabbit: 79%; Guinea pig: 79%

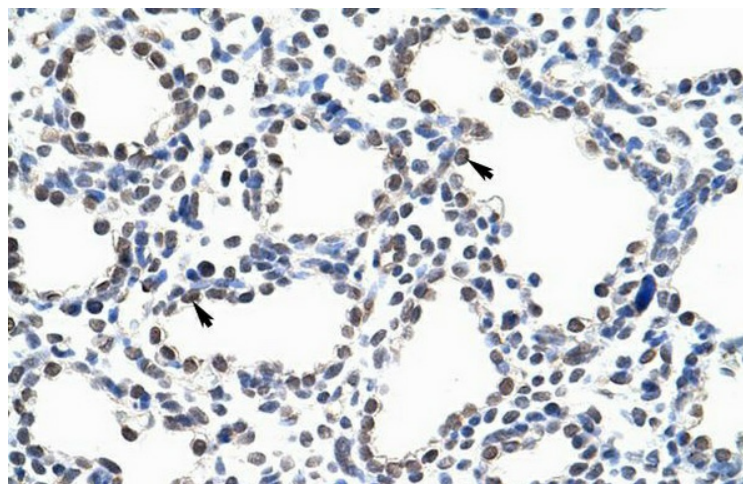


[View online »](#)

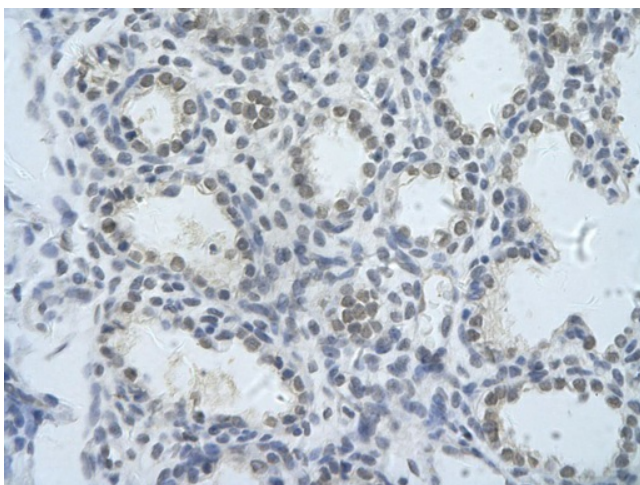
Product images:



WB Suggested Anti-KIAA0020 Antibody Titration: 1.25 ug/ml; ELISA Titer: 1: 312500; Positive Control: HepG2 cell lysate. KIAA0020 is supported by BioGPS gene expression data to be expressed in HepG2



Paraffin Embedded Tissue: Human Lung Cellular Data: Alveolar cells Antibody Concentration: 4.0-8.0 ug/ml Magnification: 400X



Rabbit Anti-KIAA0020 Antibody; Paraffin
Embedded Tissue: Human alveolar cell; Cellular
Data: Epithelial cells of renal tubule; Antibody
Concentration: 4.0-8.0 ug/ml; Magnification: 400X