

Product datasheet for **TA345756**

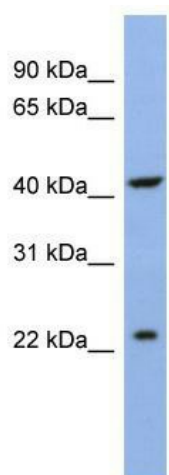
SLC35F1 Rabbit Polyclonal Antibody

Product data:

Product Type:	Primary Antibodies
Applications:	WB
Recommended Dilution:	WB
Reactivity:	Human
Host:	Rabbit
Isotype:	IgG
Clonality:	Polyclonal
Immunogen:	The immunogen for anti-SLC35F1 antibody: synthetic peptide directed towards the N terminal of human SLC35F1. Synthetic peptide located within the following region: MIPPEQPQQQLQPPSPAPPNHVTTIENLPAEGSGGGGSLSSASSRAGVRQ
Formulation:	Liquid. Purified antibody supplied in 1x PBS buffer with 0.09% (w/v) sodium azide and 2% sucrose. <i>Note that this product is shipped as lyophilized powder to China customers.</i>
Purification:	Affinity Purified
Conjugation:	Unconjugated
Storage:	Store at -20°C as received.
Stability:	Stable for 12 months from date of receipt.
Predicted Protein Size:	45 kDa
Gene Name:	solute carrier family 35 member F1
Database Link:	NP_001025029 Entrez Gene 222553 Human Q5T1Q4
Background:	SLC35F1 is a putative solute transporter.
Synonyms:	C6orf169; dj230l3.1
Note:	Immunogen Sequence Homology: Human: 100%; Dog: 83%; Pig: 83%; Guinea pig: 83%; Mouse: 80%
Protein Families:	Transmembrane



[View online »](#)

Product images:

WB Suggested Anti-SLC35F1 Antibody Titration:
0.2-1 ug/ml; ELISA Titer: 1: 312500; Positive
Control: OVCAR-3 cell lysate