

Product datasheet for **TA345753**

U2AF35 (U2AF1) Rabbit Polyclonal Antibody

Product data:

Product Type:	Primary Antibodies
Applications:	WB
Recommended Dilution:	WB
Reactivity:	Human
Host:	Rabbit
Isotype:	IgG
Clonality:	Polyclonal
Immunogen:	The immunogen for anti-U2AF1 antibody: synthetic peptide directed towards the N terminal of human U2AF1. Synthetic peptide located within the following region: MAEYLASIFGTEKDKVNCSEFYFKIGACRHHGDRCSRLHNKPTFSQTILIQN
Formulation:	Liquid. Purified antibody supplied in 1x PBS buffer with 0.09% (w/v) sodium azide and 2% sucrose. <i>Note that this product is shipped as lyophilized powder to China customers.</i>
Purification:	Affinity Purified
Conjugation:	Unconjugated
Storage:	Store at -20°C as received.
Stability:	Stable for 12 months from date of receipt.
Predicted Protein Size:	28 kDa
Gene Name:	U2 small nuclear RNA auxiliary factor 1
Database Link:	NP_001020374 Entrez Gene 7307 Human Q01081
Background:	This gene belongs to the splicing factor SR family of genes. U2 auxiliary factor, comprising a large and a small subunit, is a non-snRNP protein required for the binding of U2 snRNP to the pre-mRNA branch site. This gene encodes the small subunit which pl
Synonyms:	FP793; RN; RNU2AF1; U2AF35; U2AFBP



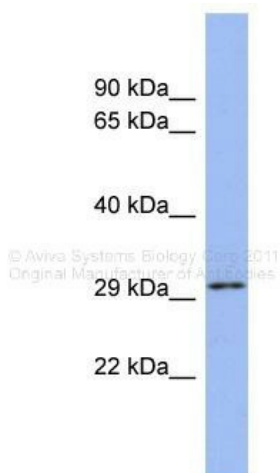
[View online »](#)

Note: Immunogen Sequence Homology: Dog: 100%; Pig: 100%; Rat: 100%; Horse: 100%; Human: 100%; Mouse: 100%; Bovine: 100%; Rabbit: 100%; Zebrafish: 100%; Guinea pig: 100%; Goat: 93%; Yeast: 86%

Protein Families: Stem cell - Pluripotency

Protein Pathways: Spliceosome

Product images:



WB Suggested Anti-U2AF1 Antibody Titration: 0.2-1 ug/ml ELISA Titer: 1: 1562500 Positive Control: Fetal stomach