

## Product datasheet for **TA345752**

### U2AF1L3 (U2AF1L4) Rabbit Polyclonal Antibody

#### Product data:

Product Type:	Primary Antibodies
Applications:	WB
Recommended Dilution:	WB
Reactivity:	Human
Host:	Rabbit
Isotype:	IgG
Clonality:	Polyclonal
Immunogen:	The immunogen for Anti-U2AF1L4 antibody is: synthetic peptide directed towards the N-terminal region of Human U2AF1L4. Synthetic peptide located within the following region: KIGVCRHGDRC SRLHNKPTFSQTIVLLNLYRNPQNTAQTADGSHCHVSDV
Formulation:	Liquid. Purified antibody supplied in 1x PBS buffer with 0.09% (w/v) sodium azide and 2% sucrose.
Purification:	Affinity Purified
Conjugation:	Unconjugated
Storage:	Store at -20°C as received.
Stability:	Stable for 12 months from date of receipt.
Predicted Protein Size:	24 kDa
Gene Name:	U2 small nuclear RNA auxiliary factor 1-like 4
Database Link:	<a href="#">NP_001035515</a> <a href="#">Entrez Gene 199746 Human</a> <a href="#">Q8WU68</a>
Background:	U2AF1L4 is a RNA-binding protein that function as a pre-mRNA splicing factor. It plays a critical role in both constitutive and enhancer-dependent splicing by mediating protein-protein interactions and protein-RNA interactions required for accurate 3'-splice site selection. It acts by enhancing the binding of U2AF2 to weak pyrimidine tracts and also participates in the regulation of alternative pre-mRNA splicing. It activates exon 5 skipping of PTPRC during T-cell activation; an event reversed by GFI1. U2AF1L4 binds to RNA at the AG dinucleotide at the 3'-splice site.

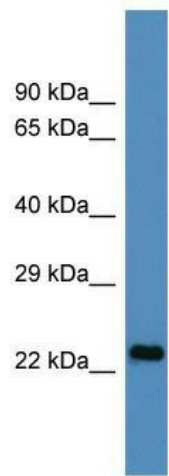


[View online »](#)

**Synonyms:** U2AF1-RS3; U2AF1L3; U2AF1L3V1; U2AF1RS3; U2af26

**Note:** Immunogen Sequence Homology: Dog: 100%; Pig: 100%; Rat: 100%; Horse: 100%; Human: 100%; Mouse: 100%; Bovine: 100%; Rabbit: 100%; Zebrafish: 100%; Guinea pig: 100%; Goat: 79%

**Product images:**



Host: Rabbit; Target Name: U2AF1L4; Sample Tissue: HepG2 Whole cell lysates; Antibody Dilution: 1.0 ug/ml