

Product datasheet for **TA345751**

CELF2 Rabbit Polyclonal Antibody

Product data:

Product Type:	Primary Antibodies
Applications:	WB
Recommended Dilution:	WB
Reactivity:	Human
Host:	Rabbit
Isotype:	IgG
Clonality:	Polyclonal
Immunogen:	The immunogen for anti-CUGBP2 antibody: synthetic peptide directed towards the N terminal of human CUGBP2. Synthetic peptide located within the following region: NIKTLPGMHHPIQMKPADSEKSNAVEDRKLFIGMVSKKCNENDIRVMFSP
Formulation:	Liquid. Purified antibody supplied in 1x PBS buffer with 0.09% (w/v) sodium azide and 2% sucrose. <i>Note that this product is shipped as lyophilized powder to China customers.</i>
Purification:	Affinity Purified
Conjugation:	Unconjugated
Storage:	Store at -20°C as received.
Stability:	Stable for 12 months from date of receipt.
Predicted Protein Size:	56 kDa
Gene Name:	CUGBP, Elav-like family member 2
Database Link:	NP_006552 Entrez Gene 10659 Human O95319



[View online »](#)

Background:

Members of the CELF/BRUNOL protein family contain two N-terminal RNA recognition motif (RRM) domains, one C-terminal RRM domain, and a divergent segment of 160-230 aa between the second and third RRM domains. Members of this protein family regulate pre-mRNA alternative splicing and may also be involved in mRNA editing, and translation. Members of the CELF/BRUNOL protein family contain two N-terminal RNA recognition motif (RRM) domains, one C-terminal RRM domain, and a divergent segment of 160-230 aa between the second and third RRM domains. Members of this protein family regulate pre-mRNA alternative splicing and may also be involved in mRNA editing, and translation. Alternative splicing results in multiple transcript variants encoding different isoforms. Members of the CELF/BRUNOL protein family contain two N-terminal RNA recognition motif (RRM) domains, one C-terminal RRM domain, and a divergent segment of 160-230 aa between the second and third RRM domains. Members of this protein family regulate pre-mRNA alternative splicing and may also be involved in mRNA editing, and translation. Alternative splicing results in multiple transcript variants encoding different isoforms.

Synonyms:

BRUNOL3; CUGBP2; ETR-3; ETR3; NAPOR

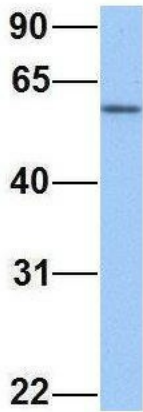
Note:

Immunogen Sequence Homology: Dog: 100%; Pig: 100%; Rat: 100%; Horse: 100%; Human: 100%; Mouse: 100%; Bovine: 100%; Rabbit: 100%; Zebrafish: 100%; Guinea pig: 100%

Product images:

WB Suggested Anti-CUGBP2 Antibody Titration: 0.2-1 ug/ml; Positive Control: Human Placenta

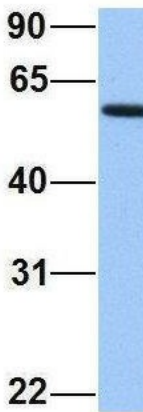
CELF2



Rabbit Anti-CELF2
Sample Type: Human Fetal Lung
Antibody Concentration: 1ug/mL

Host: Rabbit; Target Name: CELF2; Sample Tissue:
Human Fetal Lung; Antibody Dilution: 1.0 ug/ml

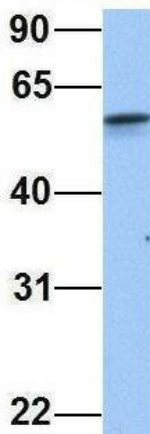
CELF2



Rabbit Anti-CELF2
Sample Type: Human Fetal Liver
Antibody Concentration: 1ug/mL

Host: Rabbit; Target Name: CELF2; Sample Tissue:
Human Fetal Liver; Antibody Dilution: 1.0 ug/ml

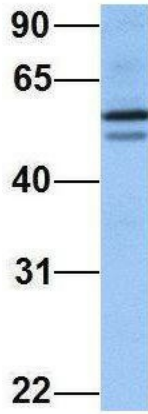
CELF2



Rabbit Anti-CELF2
Sample Type: Human Fetal
Heart
Antibody Concentration: 1ug/mL

Host: Rabbit; Target Name: CELF2; Sample Tissue:
Human Fetal Heart; Antibody Dilution: 1.0 ug/ml

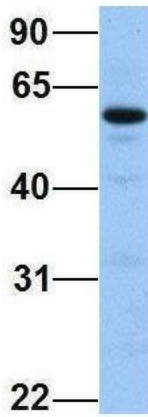
CELF2



Rabbit Anti-CELF2
Sample Type: Human Jurkat
Antibody Concentration: 1ug/mL

Host: Rabbit; Target Name: CELF2; Sample Tissue: Jurkat; Antibody Dilution: 1.0 ug/ml; CELF2 is strongly supported by BioGPS gene expression data to be expressed in Jurkat

CELF2



Rabbit Anti-CELF2
Sample Type: Human 721_B
Antibody Concentration: 1ug/mL

Host: Rabbit; Target Name: CELF2; Sample Tissue: 721_B; Antibody Dilution: 1.0 ug/ml; CELF2 is strongly supported by BioGPS gene expression data to be expressed in Human 721_B cells