

Product datasheet for **TA345749**

RPS14 Rabbit Polyclonal Antibody

Product data:

Product Type:	Primary Antibodies
Applications:	WB
Recommended Dilution:	WB
Reactivity:	Human
Host:	Rabbit
Isotype:	IgG
Clonality:	Polyclonal
Immunogen:	The immunogen for anti-RPS14 antibody: synthetic peptide directed towards the middle region of human RPS14. Synthetic peptide located within the following region: GNRTKTPGPGAQSA LRALARSGMKIGRIEDVTPIPSDSTRRKGGRRGRRL
Formulation:	Liquid. Purified antibody supplied in 1x PBS buffer with 0.09% (w/v) sodium azide and 2% sucrose. <i>Note that this product is shipped as lyophilized powder to China customers.</i>
Purification:	Protein A purified
Conjugation:	Unconjugated
Storage:	Store at -20°C as received.
Stability:	Stable for 12 months from date of receipt.
Predicted Protein Size:	17 kDa
Gene Name:	ribosomal protein S14
Database Link:	NP_001020242 Entrez Gene 6208 Human P62263



[View online »](#)

Background:

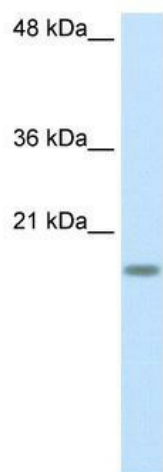
Ribosomes, the organelles that catalyze protein synthesis, consist of a small 40S subunit and a large 60S subunit. Together these subunits are composed of 4 RNA species and approximately 80 structurally distinct proteins. RPS14 is a ribosomal protein that is a component of the 40S subunit. The protein belongs to the S11P family of ribosomal proteins. It is located in the cytoplasm. In Chinese hamster ovary cells, mutations in this gene can lead to resistance to emetine, a protein synthesis inhibitor. Ribosomes, the organelles that catalyze protein synthesis, consist of a small 40S subunit and a large 60S subunit. Together these subunits are composed of 4 RNA species and approximately 80 structurally distinct proteins. This gene encodes a ribosomal protein that is a component of the 40S subunit. The protein belongs to the S11P family of ribosomal proteins. It is located in the cytoplasm. Transcript variants utilizing alternative transcription initiation sites have been described in the literature. As is typical for genes encoding ribosomal proteins, there are multiple processed pseudogenes of this gene dispersed through the genome. In Chinese hamster ovary cells, mutations in this gene can lead to resistance to emetine, a protein synthesis inhibitor. Multiple alternatively spliced transcript variants encoding the same protein have been found for this gene.

Synonyms:

EMTB; S14

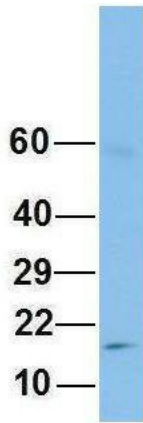
Note:

Immunogen Sequence Homology: Dog: 100%; Pig: 100%; Rat: 100%; Horse: 100%; Human: 100%; Mouse: 100%; Rabbit: 100%; Zebrafish: 100%; Guinea pig: 100%; Yeast: 93%

Product images:

WB Suggested Anti-RPS14 Antibody Titration: 2.5 ug/ml; ELISA Titer: 1: 12500; Positive Control: HepG2 cell lysate

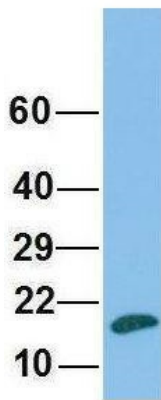
RPS14



Rabbit Anti-RPS14
Sample Type: Human Fetal Lung
Antibody Concentration: 1ug/mL

Host: Rabbit; Target Name: RPS14; Sample
Tissue: Human Fetal Lung; Antibody Dilution: 1.0
ug/ml

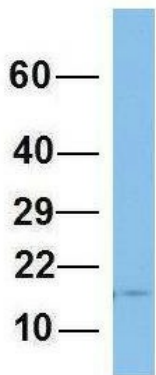
RPS14



Rabbit Anti-RPS14
Sample Type: Human Fetal Liver
Antibody Concentration: 1ug/mL

Host: Rabbit; Target Name: RPS14; Sample
Tissue: Human Fetal Liver; Antibody Dilution: 1.0
ug/ml

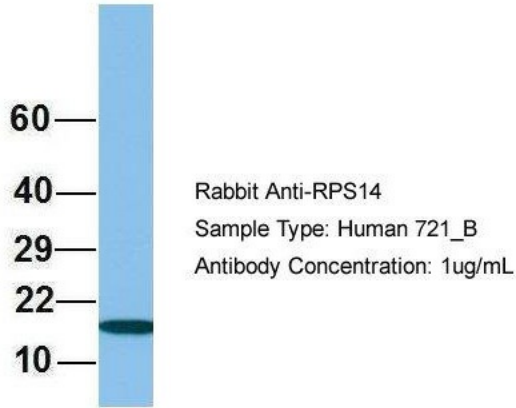
RPS14



Rabbit Anti-RPS14
Sample Type: Human Fetal Brain
Antibody Concentration: 1ug/mL

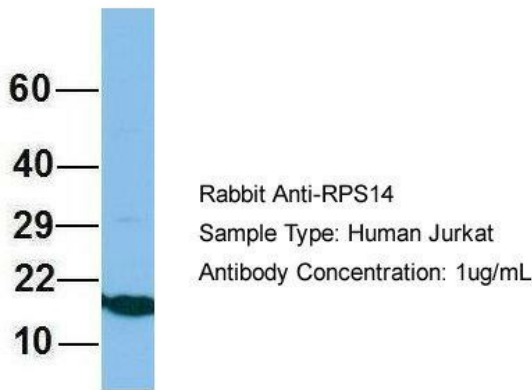
Host: Rabbit; Target Name: RPS14; Sample
Tissue: Human Fetal Brain; Antibody Dilution: 1.0
ug/ml

RPS14



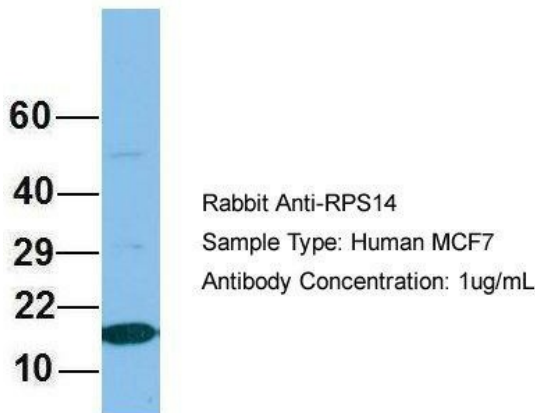
Host: Rabbit; Target Name: RPS14; Sample Tissue: 721_B; Antibody Dilution: 1.0 ug/ml; RPS14 is strongly supported by BioGPS gene expression data to be expressed in Human 721_B cells

RPS14



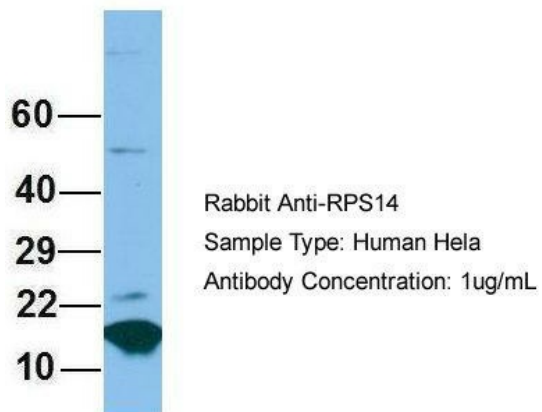
Host: Rabbit; Target Name: RPS14; Sample Tissue: Jurkat; Antibody Dilution: 1.0 ug/ml; RPS14 is supported by BioGPS gene expression data to be expressed in Jurkat

RPS14



Host: Rabbit; Target Name: RPS14; Sample Tissue: MCF7; Antibody Dilution: 1.0 ug/ml; RPS14 is supported by BioGPS gene expression data to be expressed in MCF7

RPS14



Host: Rabbit; Target Name: RPS14; Sample Tissue: HeLa; Antibody Dilution: 1.0 ug/ml; RPS14 is supported by BioGPS gene expression data to be expressed in HeLa