

## Product datasheet for **TA345745**

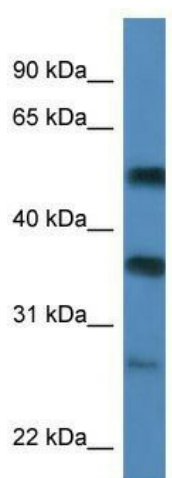
### SERBP1 Rabbit Polyclonal Antibody

#### Product data:

Product Type:	Primary Antibodies
Applications:	WB
Recommended Dilution:	WB
Reactivity:	Human
Host:	Rabbit
Isotype:	IgG
Clonality:	Polyclonal
Immunogen:	The immunogen for anti-SERBP1 antibody: synthetic peptide directed towards the C terminal of human SERBP1. Synthetic peptide located within the following region: PNEGADGQWKKGFVLHKSSEEHAEDSVMDHHRKRPANDITSQLEINFG
Formulation:	Liquid. Purified antibody supplied in 1x PBS buffer with 0.09% (w/v) sodium azide and 2% sucrose. <i>Note that this product is shipped as lyophilized powder to China customers.</i>
Purification:	Affinity Purified
Conjugation:	Unconjugated
Storage:	Store at -20°C as received.
Stability:	Stable for 12 months from date of receipt.
Predicted Protein Size:	45 kDa
Gene Name:	SERPINE1 mRNA binding protein 1
Database Link:	<a href="#">NP_001018077</a> <a href="#">Entrez Gene 26135 Human</a> <a href="#">Q8NC51</a>
Background:	SERBP1 may play a role in the regulation of mRNA stability. It binds to the 3'-most 134 nt of the SERPINE1/PAI1 mRNA, a region which confers cyclic nucleotide regulation of message decay.
Synonyms:	CGI-55; CHD3IP; HABP4L; PAI-RBP1; PAIRBP1
Note:	Immunogen Sequence Homology: Dog: 100%; Pig: 100%; Rat: 100%; Human: 100%; Mouse: 100%; Bovine: 100%; Rabbit: 100%; Guinea pig: 100%; Horse: 86%



[View online »](#)

**Product images:**

WB Suggested Anti-SERBP1 Antibody Titration: 0.2-1 ug/ml; ELISA Titer: 1: 62500; Positive Control: MCF7 cell lysate. There is BioGPS gene expression data showing that SERBP1 is expressed in MCF7