

## Product datasheet for **TA345744**

### RPS24 Rabbit Polyclonal Antibody

#### Product data:

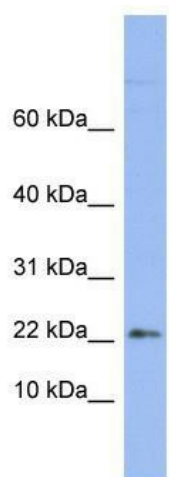
Product Type:	Primary Antibodies
Applications:	WB
Recommended Dilution:	WB
Reactivity:	Human
Host:	Rabbit
Isotype:	IgG
Clonality:	Polyclonal
Immunogen:	The immunogen for anti-RPS24 antibody: synthetic peptide directed towards the middle region of human RPS24. Synthetic peptide located within the following region: GFGMIYDSL DYAKKNEPKHRLARHGLYEKKKTSRKQRKERKNRMKKVRGT
Formulation:	Liquid. Purified antibody supplied in 1x PBS buffer with 0.09% (w/v) sodium azide and 2% sucrose.
Purification:	Affinity Purified
Conjugation:	Unconjugated
Storage:	Store at -20°C as received.
Stability:	Stable for 12 months from date of receipt.
Predicted Protein Size:	15 kDa
Gene Name:	ribosomal protein S24
Database Link:	<a href="#">NP_001017</a> <a href="#">Entrez Gene 6229 Human</a> <a href="#">P62847</a>
Background:	Ribosomes, the organelles that catalyze protein synthesis, consist of a small 40S subunit and a large 60S subunit. Together these subunits are composed of 4 RNA species and approximately 80 structurally distinct proteins. This gene encodes a ribosomal pro
Synonyms:	DBA3; S24
Note:	Immunogen Sequence Homology: Dog: 100%; Pig: 100%; Rat: 100%; Horse: 100%; Human: 100%; Mouse: 100%; Bovine: 100%; Rabbit: 100%; Guinea pig: 100%; Zebrafish: 93%



[View online »](#)

Protein Pathways: Ribosome

### Product images:



WB Suggested Anti-RPS24 Antibody Titration: 0.2-1 ug/ml; ELISA Titer: 1: 312500; Positive Control: OVCAR-3 cell lysate. RPS24 is supported by BioGPS gene expression data to be expressed in OVCAR3