

Product datasheet for **TA345739**

CARS1 Rabbit Polyclonal Antibody

Product data:

Product Type:	Primary Antibodies
Applications:	WB
Recommended Dilution:	WB
Reactivity:	Human
Host:	Rabbit
Isotype:	IgG
Clonality:	Polyclonal
Immunogen:	The immunogen for anti-CARS antibody: synthetic peptide directed towards the N terminal of human CARS. Synthetic peptide located within the following region: MQTPPLQQPHQEQVFLAFLVIVIPSLTKEVFIPQDGKKVTWYCCGPTVY
Formulation:	Liquid. Purified antibody supplied in 1x PBS buffer with 0.09% (w/v) sodium azide and 2% sucrose. <i>Note that this product is shipped as lyophilized powder to China customers.</i>
Purification:	Affinity Purified
Conjugation:	Unconjugated
Storage:	Store at -20°C as received.
Stability:	Stable for 12 months from date of receipt.
Predicted Protein Size:	84 kDa
Gene Name:	cysteinyl-tRNA synthetase
Database Link:	NP_001014438 Entrez Gene 833 Human P49589
Background:	CARS is a class 1 aminoacyl-tRNA synthetase, cysteinyl-tRNA synthetase. Each of the twenty aminoacyl-tRNA synthetases catalyzes the aminoacylation of a specific tRNA or tRNA isoaccepting family with the cognate amino acid. CARS gene is one of several loca
Synonyms:	CARS1; CYSRS; cysteine-tRNA ligase; cysteine transase; cysteine tRNA ligase 1; cysteinyl-tRNA synthetase; cytoplasmic; MGC:11246; OTTHUMP00000012605
Note:	Immunogen Sequence Homology: Human: 100%; Yeast: 82%

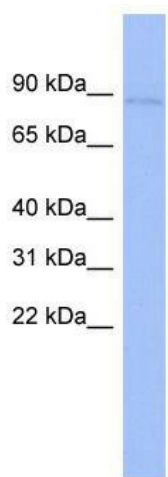


[View online »](#)

Protein Families: Druggable Genome

Protein Pathways: Aminoacyl-tRNA biosynthesis

Product images:



WB Suggested Anti-CARS Antibody Titration: 0.2-1 ug/ml; ELISA Titer: 1: 312500; Positive Control: THP-1 cell lysate